

MID SUFFOLK DISTRICT COUNCIL

TO: Council	REPORT NUMBER: MC/21/26
FROM: Councillor John Whitehead, Cabinet Member for Finance	DATE OF MEETING: 24 February 2022
OFFICER: Katherine Steel, Assistant Director, Corporate Resources	KEY DECISION REF NO. N/A

GENERAL FUND BUDGET 2022/23 AND FOUR-YEAR OUTLOOK

1. PURPOSE OF REPORT

- 1.1 The purpose of this report is to present the General Fund Budget for 2022/23 and four-year outlook.
- 1.2 To enable Cabinet Members to consider key aspects of the 2022/23 Budgets, including Council Tax and to approve the final Budget.

2. OPTIONS CONSIDERED

- 2.1 Setting a balanced budget is a statutory requirement, therefore no other options are appropriate in respect of this.

3. RECOMMENDATIONS
3.1 That the General Fund Budget proposals for 2022/23 and four-year outlook set out in the report be approved.
3.2 That the General Fund Budget for 2022/23 is based on no increase to the Band D Council Tax.
REASON FOR DECISION
To bring together all the relevant information to enable Cabinet Members to review, consider and comment upon the Councils General Fund budget for endorsement and recommendation to Council.

4. KEY INFORMATION

Background and COVID19

- 4.1 In February 2021 Mid Suffolk District Council approved the General Fund Budget 2021/22 and Four-Year Outlook. The budget was prepared during one of the most challenging and uncertain times due to the impacts of COVID19 on the Council's finances, staff, residents, and local economy. Income streams were reviewed when setting the budget and revised where appropriate and any COVID19 related costs were assumed to be funded from the COVID19 reserve.
- 4.2 The financial impact of COVID19 continues to be monitored during 2021/22 and the current forecast was presented to Cabinet in December as part of the second quarter budget monitoring report. As time passes more information is gathered about the impact and how this may affect the Council's finances going forward, but some uncertainty continues particularly in terms of what permanent changes in behaviour will be seen.
- 4.3 The Government provided some funding for the impact of COVID19 for the first quarter of 2021/22, in addition to what was allocated during 2020/21, but it is unlikely that any further funding will now be provided, so the Council needs to manage any continuing adverse impacts within the resources available.

2021/22 Budget and Forecast Outturn

- 4.4 On 18 February 2021 the Council set a balanced budget for 2021/22. This comprised gross expenditure of £32.5m and income of £23.1m, to give a net service budget of £9.4m, which is primarily funded from council tax, business rates and government grants. In addition, there was a new capital allocation totalling £20m. Chart 1 below shows how the £32.5m gross expenditure is allocated across the services and Chart 2 below shows the breakdown of the £23.1m income.

Chart 1: Gross Expenditure by service area in 2021/22 (£32.5m)

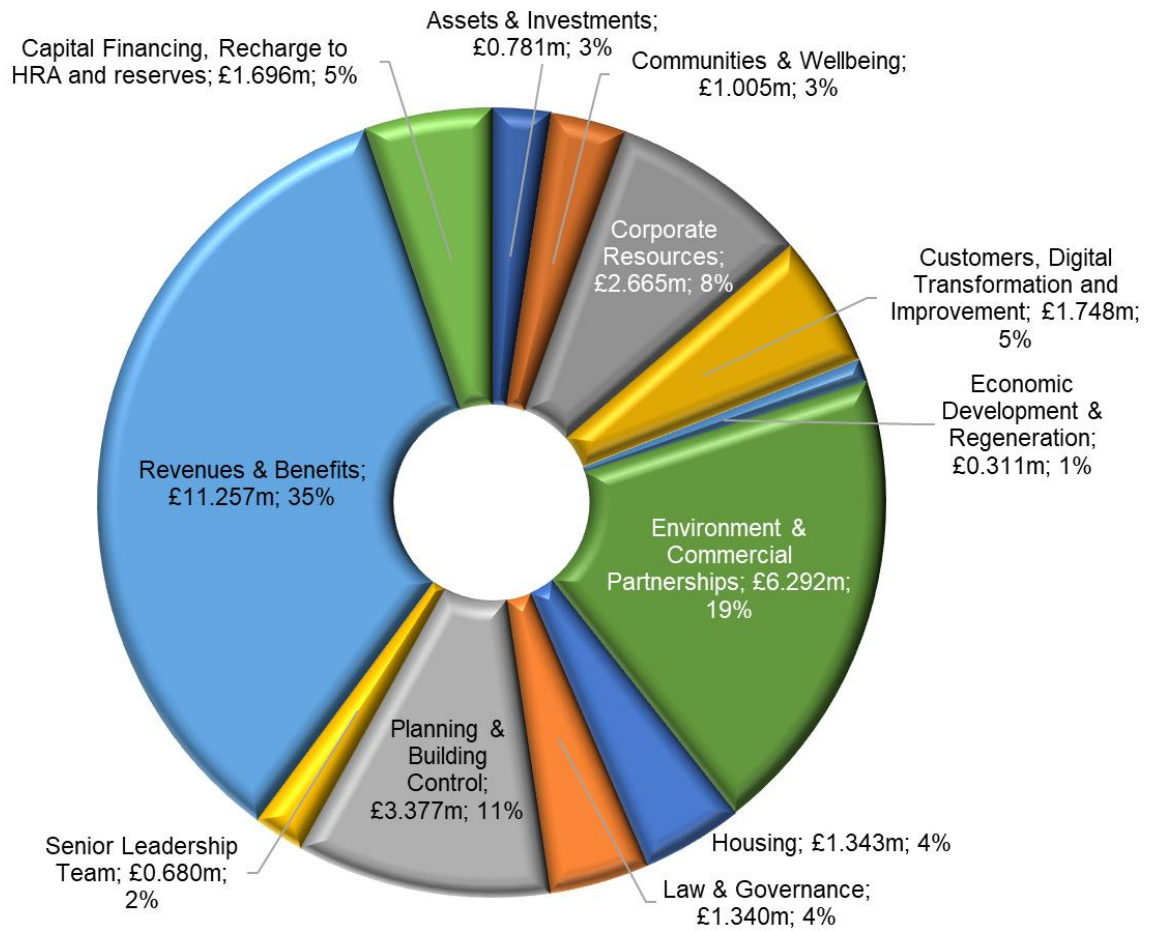
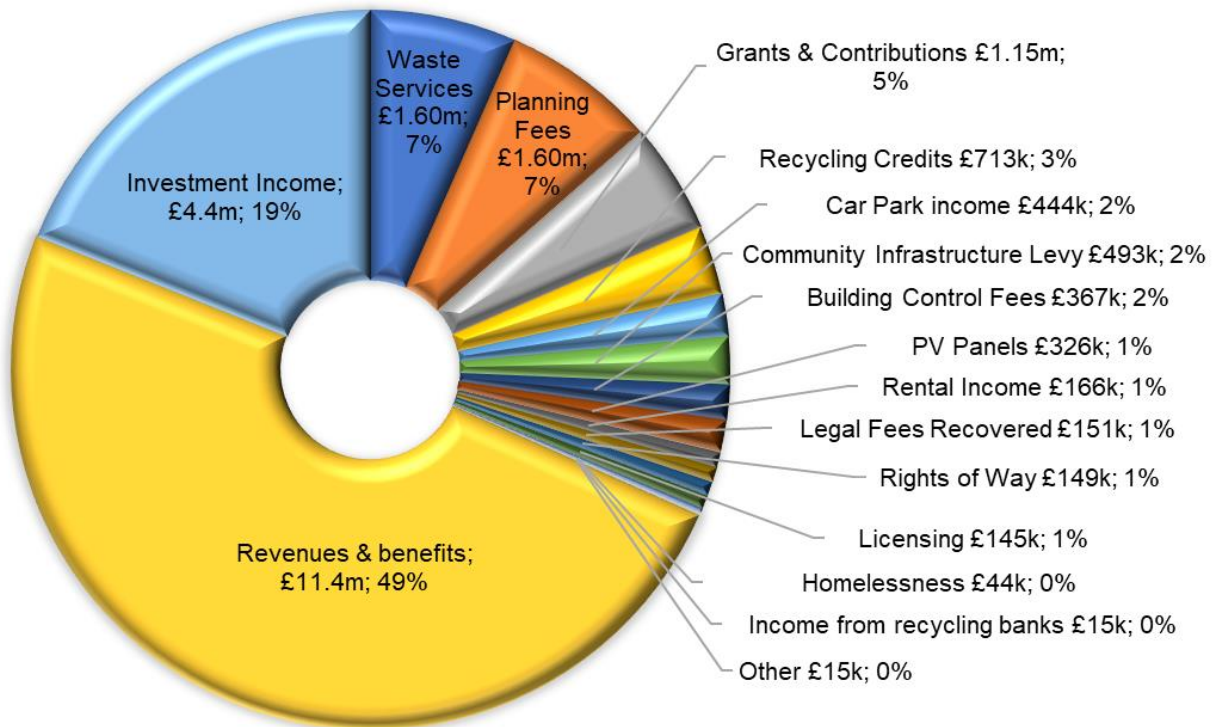


Chart 2: Service Income in 2021/22 (£23.1m)



- 4.5 The second quarter budget monitoring report was presented to Cabinet on 6 December 2021 showing a forecast surplus position as at 31 March 2022 of £398k. There are several variances which contribute to the overall position, that are detailed in the report, but two key factors are planning application income continues to exceed the budget and one-off additional income from the Suffolk business rates pool.
- 4.6 The third quarter position will be presented to Cabinet on 7 March 2022.

Medium Term Financial Strategy (MTFS) 2022-2026

- 4.7 To achieve the Vision, the Council needs to take a medium-term view of the budget through a robust financial strategy that is focused on delivering the six corporate strategic priorities.



- 4.8 The Council's main strategic financial aim remains to become self-financing i.e., not reliant on Government funding. The Council's parallel aim is to generate more funds than are required purely for core services, to enable additional investment into the district.

4.9 There are 3 key elements that need to be carefully balanced to ensure success, which are:

- Cost management
- Income generation and
- Service levels.

4.10 The approach over the medium term is to transform the Council into an organisation that is thriving, by continuously reviewing, remodelling, and reinventing the way the Council operates. For the Council to thrive, a strong focus is placed on the wellbeing of our staff and residents.

The following overarching principles are considered when evaluating ideas and opportunities for change:

- Reduce our costs (both internally and across the wider system)
- Increase our income
- Provide better / “best” value
- Increased social value
- Provide a better service for our customers
- Reduction in administration costs, without compromising service
- Reduced climate change and biodiversity impact, where financially viable

4.11 The focus is on:

- internal efficiencies and improvements
- continuously streamlining work and reducing waste in processes
- greater cross-functional working and multi-skilling
- improving ways of working to move away from ‘professional silos and toward integrated services for the public
- customer demand understood, analysed, and met through new services and business models
- demand is re-shaped and managed while engaging service users to ascertain priorities.

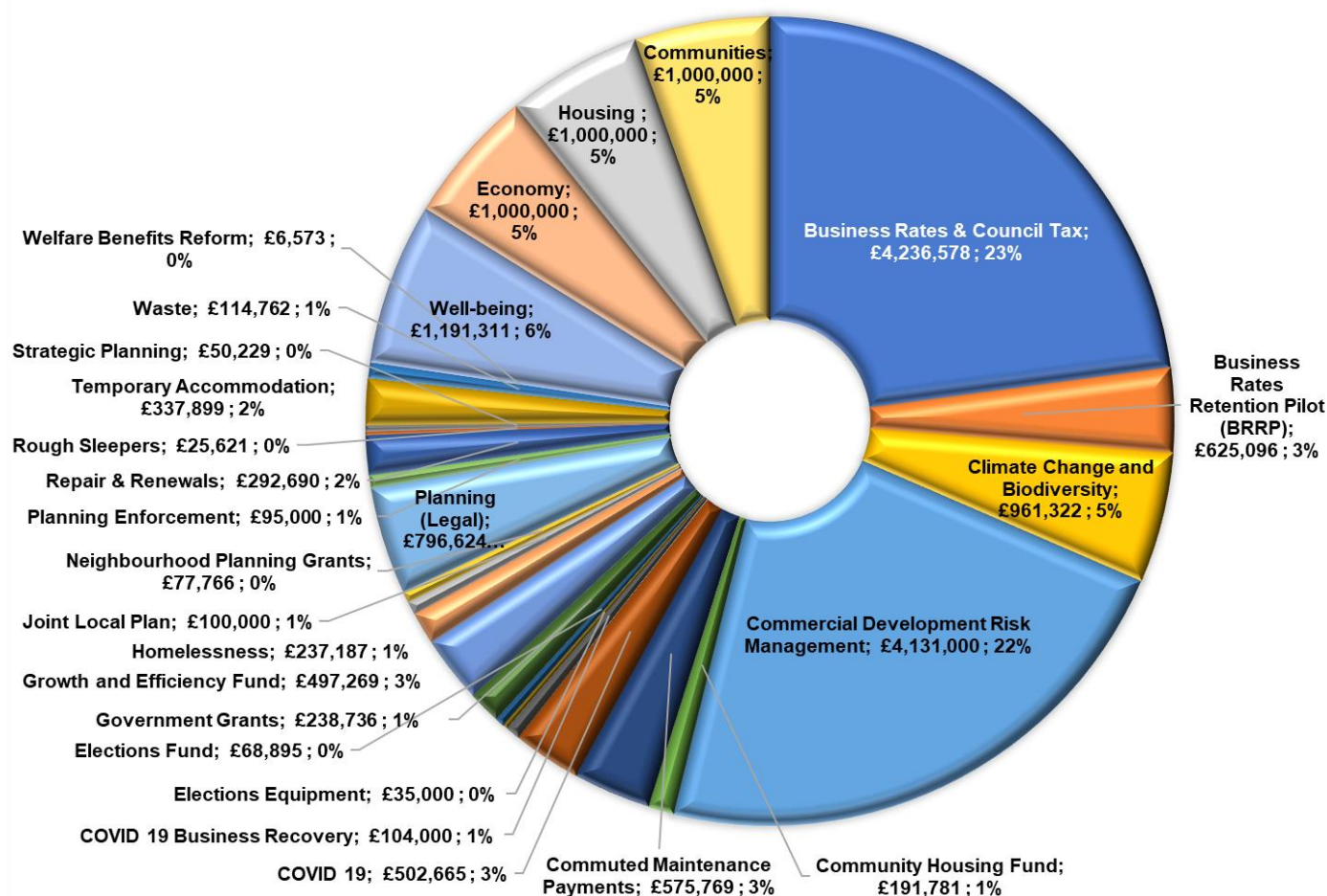
4.12 The approach below shows in more detail for each element the methodology that has been adopted to achieve this.



- 4.13 Further work will continue in 2022/23 and a corporate plan will be established early in the new year to drive out inefficiencies across the organisation, but this is likely to require additional resources and investment. The Council will continue this approach to further transform the way it operates over the next three years, including looking at new working methods by building on the changes made to practices during the COVID19 pandemic.
- 4.14 Following this approach enabled the Cabinet to approve the allocation of £5.1m of resources towards four of its key priorities of housing, communities, wellbeing, and the economy in November 2021. In addition to this, there is funding available to support the climate change and biodiversity strategy and action plans.
- 4.15 A further key element of the Strategy is having adequate reserves available to manage any unexpected changes to spending and funding plans. They are a fundamental part of the way the Council manages its business risks and maintains a stable financial position.
- 4.16 Section 43 of the Local Government Finance Act 1992 requires that, when setting the budget for the forthcoming year, authorities should have regard to the level of reserves needed to provide sufficient resources to finance estimated future expenditure, plus any appropriate allowances that should be made for contingencies.
- 4.17 Reserves only provide one-off funding, so a core principle is that reserves should not be used to cover ongoing gaps between expenditure and funding and should be replenished as soon as practicable when used.
- 4.18 There are generally two types of reserves: unallocated and earmarked. The unallocated reserve is known as the General Fund Balance and is held by the Council to manage the financial risks it faces, and to ensure that it can remain solvent should any of these risks become realised. This reserve currently stands at £1.052m and traditionally represents about 10% of the net budget but is currently standing at 12%.

Earmarked reserves are held by the Council's services and used to pay for specific commitments or set aside for anticipated projects and programmes. The projected earmarked reserves position as at 31 March 2022 is shown in the chart below.

Chart 3: Projected Earmarked Reserves Balances at 31st March 2022 (£18.5m)



Changing Landscape for Local Government

4.19 Over recent months there have been some consultations and announcements that indicate the Government's wish to ensure that local government focuses on its core functions rather than expanding into what are seen as more 'commercial' or 'private sector' type activities. Some examples are:

- Changes to the Public Works Loan Board (PWLB) lending criteria to exclude the ability to borrow to invest in commercial property to generate income.
- Consultations on the CIPFA Treasury Management and Prudential Codes to strengthen the intention around commercial investments and provide clarity about borrowing and investments
- Government consultation about minimum revenue provision and use of capital receipts from commercial activity

4.20 The Council will need to have regard to these changes and the new operating parameters when considering future activity under the MTFS.

National Economic Position

- 4.21 The Office for Budget Responsibility's (OBR) economic forecasts, provided alongside the Chancellor's Comprehensive Spending Review (SR21) in October, show improvement compared with the numbers from March 2021. The economic scarring from the pandemic is now forecast to be 2% of Gross Domestic Product (GDP) compared to 3% forecast in March 2021 and economic growth is forecast to be 6.5% in 2021, 6% in 2022 and 2.1% in 2023 showing a strong recovery from last year's deep recession. The forecasts for the years beyond are more worrying at 1.3% in 2024, 1.6% in 2025 and 1.7% in 2026, as this is below the long-term trend of 2% and may signal difficulty in the ability to generate tax receipts to fund growing spending pressures for social care and the NHS.
- 4.22 The central government budget deficit peaked at £320bn in 2020/21 before falling to an estimated £183bn in 2021/22. The figure for the current year is about £35bn less than the March 2021 estimate and net borrowing is expected to settle around £50bn per annum.
- 4.23 The Consumer Price Index (CPI) dropped significantly in 2020 during the pandemic but had risen to 3.1% in September and has gone up further to 5.1% in November and 5.4% in December 2021. It is expected to hit a peak in the next few months before returning to its target level of 2% by 2023 or 2024, although economic commentators are increasingly challenging that assumption.
- 4.24 The Chancellor presented the Comprehensive Spending Review (SR21) on 27 October 2021 in the context of the national economic position as detailed above. Some of the key headlines for local government and specifically our council, ahead of the provisional finance settlement set out in paragraph 4.26 below, are as follows:
- Core spending power estimated to increase annually by an average of 3.2%, but this assumes maximum council tax increases. Real terms average increase of 1%.
 - Additional £4.8bn in grant over the next 3 years.
 - An increase in grant in 2022/23 of £1.5bn to be distributed via the finance settlement but then no further growth. Any increase in funding beyond 2022/23 will have to come from council tax.
 - Core council tax increase thresholds assumed as 1.99% and a further 1% for social care.
 - No announcements at that time about New Homes Bonus, Fair Funding Review, Business Rates Reset or the length of the settlement.
 - Business rates announcements
 - Freezing the multiplier for 2022/23
 - 50% discount for retail, hospitality, and leisure sectors up to a maximum of £110k per business in 2022/23
 - Targeted reliefs and exemptions from April 2023 to support the decarbonisation of buildings
 - 100% relief on eligible property improvements to be implemented in 2023 (any increase in rates payable delayed for 12 months)

- Extend transitional relief for small and medium-sized businesses for 1 year
 - Local authorities will be fully funded for the loss of income from the multiplier, reliefs, and discounts
 - Revaluations every 3 years from 2023
- Specific funding allocations announced that the Council may be eligible to bid for across a range of initiatives.

4.25 After the Chancellor's announcements, the Minister for the Department for Levelling-Up, Housing and Communities (DLUHC) announced that the move to 75% retention of business rates would be placed on hold as it was seen to contradict the aims of the levelling-up agenda.

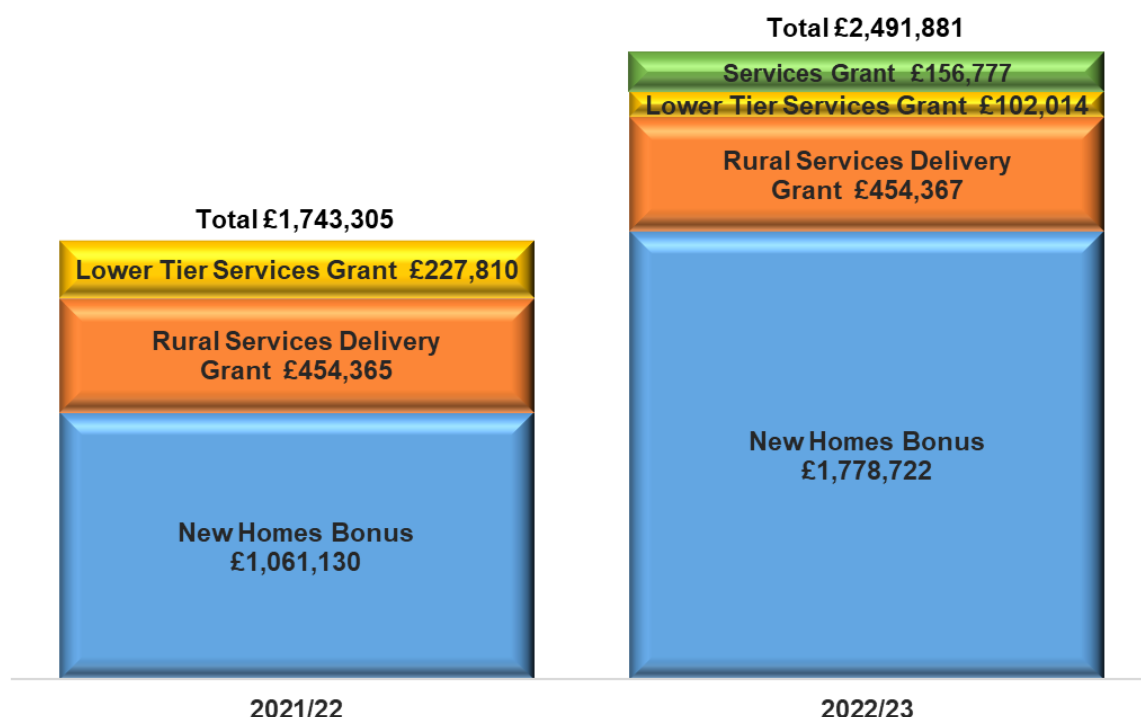
Funding

4.26 The provisional local government finance settlement for 2022/23 was announced on 16 December 2021. The key headlines are as follows:

- The settlement is for one-year only.
- A new one-off Services Grant in 2022/23 distributed via the Settlement Funding Formula. Distribution for 2023/24 and beyond will be considered in consultation with councils.
- For shire district councils' council tax can be increased by the higher of 2% or £5, which the Government believes protects local taxpayers from excessive council tax increases.
- The current approach to the New Homes Bonus is being applied to 2022/23 with a further one-year allocation for housing growth between October 2020 and October 2021.
- Rural Services Delivery Grant is being maintained at the same level as 2021/22.
- Lower Tier Services Grant is being maintained at the same level in 2022/23 despite the announcement when it was brought in last year that it was for one year only.
- A commitment to ensuring that funding allocations for councils are based on an up-to-date assessment of our needs and resources. The Government will work closely with the sector to look at challenges and opportunities before consulting on any potential changes. Part of this will look at options to support local authorities through transitional protection.

4.27 The 2022/23 grant allocations for Mid Suffolk compared to the budget for 2021/22 are shown below.

Chart 4: government grant allocations 2021/22 and 2022/23



New Homes Bonus

- 4.28 Since NHB was introduced in 2011/12 the Council has received £18.4m in total.
- 4.29 As shown in Table 1 below, the use of NHB to balance the budget increased from 13% in 2017/18 to 24% in 2018/19. Since 2019/20 the Council continues to be in the position of being able to balance the budget without any use of NHB transferring the full allocation to earmarked reserves. From 2011/12 to 2021/22 £9.5m NHB has been transferred to the Growth and Efficiency Fund.
- 4.30 Whilst the Council is not reliant on NHB to balance the budget in any year up to 2025/26, the anticipated surplus in 2023/24 to 2025/26 reduces year on year as NHB is phased out and inflationary pressures continue to increase the Councils net cost of service. By 2025/26 the projected surplus is £1.4m a £2.7m decrease on the 2023/24 position of £4.1m.

Table 1: New Homes Bonus used from 2017/18 to 2021/22

	2017/18	2018/19	2019/20	2020/21	2021/22	2022/23
	£'000	£'000	£'000	£'000	£'000	£'000
Amount of NHB received	2,028	1,463	1,380	1,612	1,061	1,779
NHB used to balance the budget	267	354	0	0	0	0
% NHB used to balance the budget	13%	24%	0%	0%	0%	0%

- 4.31 Table 2 and Graph 1 below shows the NHB over the last eleven years plus the estimated allocation for 2023/24 to 2025/26. This assumes tax base growth of 2.35% in 2023/24, 1.84% in 2024/25 and 1.03% in 2025/26 and all the legacy payments having been phased out.

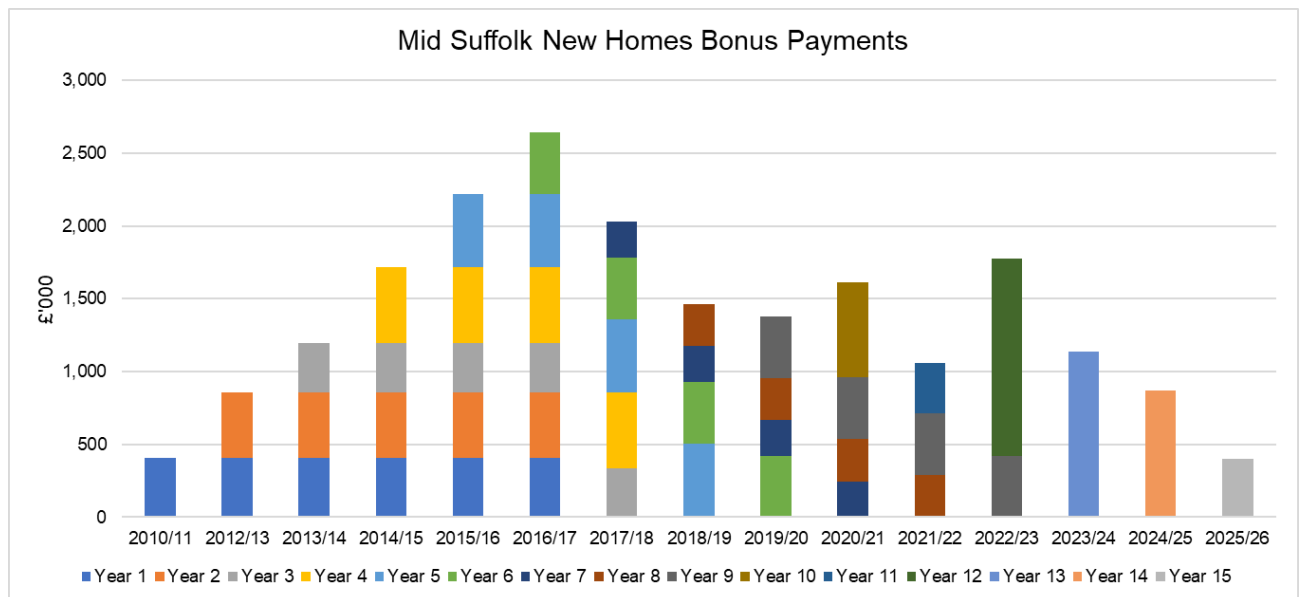
4.32 This shows how NHB has declined from a peak of £2.6m in 2016/17 to £1.8m in 2022/23, after the Government announced it would reduce the allocation from 6 years to 5 years in 2017/18 and to 4 years in 2018/19 and continued to phase out the legacy payments, as well as introducing a 0.4% growth baseline in 2017/18. The allocation has risen again for 2022/23 due to the increased number of homes that have been completed in the district between October 2020 and October 2021.

4.33 For 2022/23 the 0.4% growth baseline for Mid Suffolk means that the first 173 new homes built received no payment.

Table 2: New Homes Bonus sums per year

Payments	2010/11	2012/13	2013/14	2014/15	2015/16	2016/17	2017/18	2018/19	2019/20	2020/21	2021/22	Provisional 2022/23	Estimate 2023/24	Estimate 2024/25	Estimate 2025/26
Year 1	409	409	409	409	409	409									
Year 2		452	452	452	452	452									
Year 3			334	334	334	334	334								
Year 4				521	521	521	521								
Year 5					506	506	506	506							
Year 6						420	420	420	420						
Year 7							247	247	247	247					
Year 8								290	290	290	290				
Year 9									422	422	422	422			
Year 10										653					
Year 11											349				
Year 12												1,356			
Year 13													1,137		
Year 14														873	
Year 15															399
Total	409	860	1,194	1,714	2,221	2,641	2,028	1,463	1,380	1,612	1,061	1,779	1,137	873	399

Graph 1: New Homes Bonus Payments - Estimated for 2023/24 to 2025/26



Council Tax

4.34 The impact from Covid on collection rates, the number of Local Council Tax Reduction (LCTR) claimants and the build rate of new homes across the district has been less than anticipated when the budget for 2021/22 was set. This means that a 4.47% increase has been calculated for the tax base for 2022/23, which will generate additional council tax income of £285k.

- 4.35 No increase in Band D Council Tax has been included for 2022/23 or the three years beyond.
- 4.36 Due to the impact from Covid being less than anticipated in 2021/22, a surplus of £293k is currently projected for the Collection Fund in 2021/22, which is £262k more than in 2021/22. The way that the Collection Fund operates means that this surplus will be recognised in the Council's budget in 2022/23.

Business Rates

- 4.37 The headlines for Business Rates are as follows:
- No change to the business rates baseline funding or levy.
 - The benefit from being part of the Suffolk business rates pool will increase by £28k and the impact of the Collection Fund forecast balance at the end of March 2022 reduces resources available by £32k.
 - A Government return (NNDR1) that is required to be submitted by 31 January 2022, may result in some further changes to the business rates figures, but any impact will be managed through the Business Rates Reserve and hence not change the bottom line.

5. FORECAST BUDGET GAP TO 2025/26

- 5.1 To establish the medium-term position several assumptions have been made as to the expected level of funding and a number of cost pressures and savings have been identified over the period.

Funding

- 5.2 Funding arrangements for councils have changed significantly in recent years, the revenue support grant has been completely removed for the Council and New Homes Bonus (NHB) legacy payments continue to be phased out with one remaining legacy payment in 2022/23. Government undertook a consultation on the future of NHB that concluded on 7 April 2021. The outcome of the consultation is still awaited and changes are now expected to be implemented from 2023/24.
- 5.3 The provisional settlement for 2022/23 is a one-year settlement. DLUHC is still committed to delivering the wider reforms to local government funding and changes are expected to be implemented for 2023/24. Therefore, the medium-term position continues to be more difficult to forecast.
- 5.4 Government has recognised that councils are now more reliant on council tax and business rates as the main sources of funding. A full review of the business rates system was published in October 2021. The government announced new support for businesses to help our high streets and town centres evolve and adapt to changing consumer demands ahead of the next revaluation; new support for investment in green technology and property improvements; changes to support more frequent revaluations; a further freeze in the business rates multiplier; and significant investment in the Valuation Office Agency (VOA). The government is currently consulting on the technical detail of these proposed changes.

5.5 In calculating the expected level of funding across all sources, the following assumptions have been made:

- a) Minimal use of reserves after 2023/24.
- b) NHB to continue on the current basis, with estimated tax base growth of 2.35% in 2023/24, 1.84% in 2024/25 and 1.03% in 2025/26.
- c) Nothing has been included for forecast Business Rates surplus or deficit beyond 2023/24 based on the assumption that the equalisation earmarked reserve will accommodate this.
- d) Receipt of government grants as set out in paragraph 4.27 above.
- e) No Council Tax increase every year for the next three years.
- f) Tax base growth of 4.47% in 2022/23, 2.35% in 2023/24, 1.84% in 2024/25 and 1.03% in 2025/26, which generates approximately £193k, £126k and £72k more council tax income in each year respectively beyond 2022/23.
- g) Due to the impact from Covid being less than anticipated in 2021/22, a surplus of £293k is currently projected for the Collection Fund in 2021/22. The way that the Collection Fund operates means that this surplus will be recognised in the Council's budget in 2022/23.

5.6 Table 3 below shows the forecast funding from 2022/23 to 2025/26. Funding decreases by 13.5% over the 4-year period.

5.7 In 2022/23 the Council will not be using any of its S31 grant or NHB to achieve a balanced budget.

Table 3: Forecast Funding 2022/23 – 2025/26

Description	2021/22	2022/23	2023/24	2024/25	2025/26
	Budget	Budget	Forecast	Forecast	Forecast
	£000	£000	£000	£000	£000
Funding:					
<u>Government Grants</u>					
New Homes Bonus - provisional 2022/23 onwards	(1,061)	(1,779)	(1,137)	(873)	(399)
S31 Business Rates Grant	(1,409)	(1,409)	(1,409)	(1,409)	(1,409)
Services Grant	-	(157)	-	-	-
Rural Services Delivery Grant	(454)	(454)	(454)	(454)	(454)
Lower Tier Services Grant	(228)	(102)	-	-	-
<u>Business Rates</u>					
Baseline Business Rates	(2,901)	(2,901)	(2,901)	(2,901)	(2,901)
Growth / Pooling Benefit	(458)	(486)	(486)	(486)	(486)
Prior Year Deficit/(Surplus)	(470)	(438)	-	-	-
<u>Council Tax</u>					
Council Tax	(6,382)	(6,667)	(6,860)	(6,986)	(7,058)
Council Tax Collection Fund (surplus) / deficit	(31)	(293)	-	-	-
Local Council Tax Support Grant - Mid Suffolk	(70)	-	-	-	-
Local Council Tax Support Grant - Town & Parish Councils	(32)	-	-	-	-
Total Funding	(13,496)	(14,685)	(13,247)	(13,110)	(12,707)

2022/23 Budget

- 5.8 In recent years the Council has tended to underspend the budget that has been set. The reasons for this have been reviewed and it has generally been due to additional income being received rather than expenditure proposals not being achieved.
- 5.9 Managers traditionally err on the side of caution when putting their budget proposals together, particularly in relation to income. Amalgamating these assumptions across the whole organisation has, in recent years, resulted in underspends at the year-end. The unintended consequence is that resources are committed during the budget process that could be used for other priorities or alternatively savings have to be made that are not actually needed.
- 5.10 For 2022/23, managers have looked to use stretching, but realistic assumptions when putting their budget proposals together across both expenditure and income. This should result in the overall outturn position being closer to the budget.
- 5.11 There is the risk that adopting the approach and events that happen during the year could result in an overspend position, but this will be monitored through the regular quarterly reporting to Cabinet and action taken if necessary. The Council has sufficient reserves to be able to manage that scenario should it come to fruition and would then be corrected when setting the budget for 2023/24.
- 5.12 The summary in Table 4 below shows the breakdown of the Council's net cost of service for 2022/23 (£8.769m) compared to 2021/22 (£8.609m), an increase of £160k.
- 5.13 The Council's 2022/23 gross expenditure is £32.2m and income is £23.4m giving a net cost of service of £8.8m. Bringing in the funding from business rates, council tax and government grants and making transfers to the Commercial Development Risk Management Reserve and Growth and Efficiency Fund (Strategic Priorities Loans) shows a net surplus of £3.35m for the 2022/23 budget, which will be transferred to the Growth & Efficiency Fund.

Table 4: General Fund Budget Summary 2022/23

Description	2021/22 Budget £000	2022/23 Budget £000	2021/22 to 2022/23 Movement £000
Expenditure			
Employees	10,087	11,224	1,137
Premises Costs	844	1,107	263
Supplies & Services	4,447	10,033	5,586
Transport Costs	471	390	(82)
Contracts	3,858	4,133	276
Transfer Payments	11,257	10,184	(1,072)
Income			
Grants and Contributions	(12,739)	(12,037)	702
Sales, Fees & Charges	(4,546)	(5,100)	(554)
Other income (incl. rental & PV panel income)	(1,483)	(1,688)	(205)
Net transfers to/(from) reserves	(108)	(5,504)	(5,396)
Net Service Expenditure	12,088	12,743	655
Recharge to HRA / Capital	(1,309)	(1,511)	(203)
Investment Income			
CIFCO - Net Interest Receivable	(2,180)	(2,169)	11
Pooled Funds - Net Income	(566)	(566)	-
Other interest receivable	(1,662)	(1,896)	(234)
Capital Financing Charges			
CIFCO - Interest Payable	565	545	(20)
Interest Payable	302	290	(12)
MRP	1,371	1,333	(38)
Total Cost of Services	8,609	8,769	160
Funding:			
Government Grants			
New Homes Bonus - provisional 2022/23 onwards	(1,061)	(1,779)	(718)
S31 Business Rates Grant	(1,409)	(1,409)	-
Services Grant	-	(157)	(157)
Rural Services Delivery Grant	(454)	(454)	(0)
Lower Tier Services Grant	(228)	(102)	126
Business Rates			
Baseline Business Rates	(2,901)	(2,901)	-
Levy			-
Growth / Pooling Benefit	(458)	(486)	(28)
Prior Year Deficit/(Surplus)	(470)	(438)	32
Council Tax			
Council Tax	(6,382)	(6,667)	(285)
Council Tax Collection Fund (surplus) / deficit	(31)	(293)	(261)
Local Council Tax Support Grant - Mid Suffolk	(70)	-	70
Local Council Tax Support Grant - Town & Parish Councils	(32)	-	32
Total Funding	(13,496)	(14,685)	(1,189)
Transfers to Reserves			
Commercial Development Risk Reserve	1,631	1,865	234
Growth & Efficiency Fund (Strategic Priorities Loan)		700	700
Growth & Efficiency Fund	1,080	3,351	2,271
Business Rates & Council Tax Reserve	1,376		(1,376)
Climate Change & Biodiversity Reserve	500		(500)
Planning (Legal) Reserve	250		(250)
Planning Enforcement Reserve	50		(50)
Shortfall / (Surplus) funding	0	0	0

2022/23 Budget Assumptions and Risks

- 5.14 Constructing a budget that runs to 13 months beyond when it was approved means that several assumptions have to be made about the conditions that are likely to exist over an extended period.
- 5.15 In calculating the 2022/23 budget, the following assumptions and amendments have been made, which highlight the key reasons for the changes from the current year to next year's proposed budget:

Staffing

- Grant funding and reserves of £443k is being used to fund additional staffing costs in 2022/23.
- Additional staff costs of £445k for new roles are included in the base budget.
- 2% pay award for 2021/22 (still outstanding) and 2022/23, however this will depend on the agreement reached between the national employers' body and the relevant trade unions. This amounts to £208k.
- Incremental progression through grades to the value of £109k has been included.
- The vacancy management factor remains at 5%. The Council's vacancy rate as at 30th September 2021 was 17% and the average rate for 2021/22 to the end of November to date is 12%. However, this is considered to be a temporary position with many posts being recruited to, so no change is proposed. An adjustment of £61k has been made to the vacancy management factor to reflect 5% of the 2022/23 staffing budget.
- Pension fund assumptions
 - future rate contribution - 23%, no change from 2021/22.
 - increase of £65k to correct an historic position, offset by a 1% reduction agreed from the last triennial valuation of the fund. The overall position is a net decrease of £7k.
 - The next triennial valuation is due as at 31 March 2022 and any changes to the employer contributions will take effect from 1 April 2023. It is anticipated that the funding position will have further improved at the next valuation date and therefore the Council's contributions could be reduced for the 3 years commencing 2023/24.

Premises

- Increase for property repairs and maintenance of £32k.
- Increase to expenses for gas and electricity on the leisure centres of £233k to move to a green tariff. Mid Suffolk is making the payments but will be fully reimbursed by Everyone Active.
- Increase in the rent payable budget for the Guaranteed Rent Scheme of £15k.
- Saving of £18k for handover of lease for Stowmarket Football Ground.

Supplies & Services

- £5.138m planned expenditure on the Council's Strategic Priorities as agreed by Cabinet in November 2021. This will be allocated across other subjective headings as the detailed work is undertaken.
- New lease agreement for Mid Suffolk Leisure Centre includes one-year payment of £175k to Everyone Active in 2022/23.
- £45k saving from a reduction of the Endeavour House floorplate assumed in second half of the year.
- Additional cost of £57k for the Inland Drainage Board Levy
- £86k additional cost for planning inspector fees.
- £90k additional cost for property condition surveys
- £69k increase in civil parking enforcement costs.
- £13k cost for well-being projects.

Transport

- Fuel costs decrease of £77k.
- Increase in car mileage and essential user allowances £32k.
- Reduction in budget for HVO fuel costs £35k.
- Other costs decreased by £2k.

Contracts

- Contracts – general increase totalling £50k including Leisure, SRP and some ICT contracts.
- Major contracts – Waste increase of £226k due to 4% increase and property/subscriber growth.

Transfer Payments

- Reduction of £1.072m is due to the migration of Housing Benefit customers to Universal Credit.

Income

- Reduction in Grants and Contributions of £1.087m from Housing Benefits migration to Universal Credit.
- A reduction in grants of £438k for Covid grant received in 2021/22.
- An increase in grants for Housing Solutions of £171k.
- Reimbursement of electricity and gas by Everyone Active increases income by £233k.
- Reduction in income of £35k from Stowmarket High School for use of the Mid Suffolk Leisure Centre.
- Match funding for Strategic Priorities projects of £438k included in grants and contributions budget.
- Car parking income projections have been increased by £94k from 2021/22.

- Increase of £2.00 to Garden Waste Subscription to fund the contractual inflationary increase for this service and an increase in subscriber numbers generating an additional £134k.
- Increase in income for planning and building control based on expected demand totalling £262k.
- Increase in rental income budget of £82k for Pure Gym and £18k for the car park.
- £38k increase in recycling credit based on latest tonnage rates and £7k decrease for income from recycling banks due to a drop in textile prices.
- Additional income of £50k expected for New Burden payment from migration to the national Local Land Charges Register. However, a reduction in income of £20k is expected for 2022/23 from ceasing charging for Local Land Charges.
- An increase in income of £80k is expected from parish councils relating to neighbourhood plans.
- Anticipated increase in income totalling £44k for charges from food and safety, street naming and numbering, public rights of way, rents, emptying of dog and litter bins, waste, licensing, and land charges.

Capital Financing charges and Investment Income

- Slippage in the Capital Programme in 2021/22 has resulted in a reduction in Minimum Revenue Provision (MRP) of £38k.
- The Council is continuing to take advantage of low short-term interest rates for both CIFCO and borrowing for the capital programme, resulting in a reduction to interest payable of £32k.
- Interest receivable on Gateway 14 increased by £234k for further investment in 2021/22 and 2022/23.
- With CIFCO now fully invested the budget includes just a small reduction for the annuity nature of loans to the company of £11k. CIFCO continues to provide income in excess of the cost to the Council of taking out the loans.

Recharges to the Housing Revenue Account (HRA) and Capital

- These are assessed each year as part of the budget process and are currently expected to general additional income of £203k to the General Fund.

5.16 The charts below show the breakdown of expenditure and income excluding transfer payments and grant income for Housing Benefits. Chart 5 below shows how the £26.9m service expenditure is allocated across the services. Chart 6 shows the total budget expenditure of £29.2m by expenditure type. Chart 7 shows the breakdown of total income of £35.1m and Chart 8 shows the breakdown of service income (£8.6m).

Chart 5: Expenditure by service area (excl. housing benefits) 2022/23 (£26.9m)

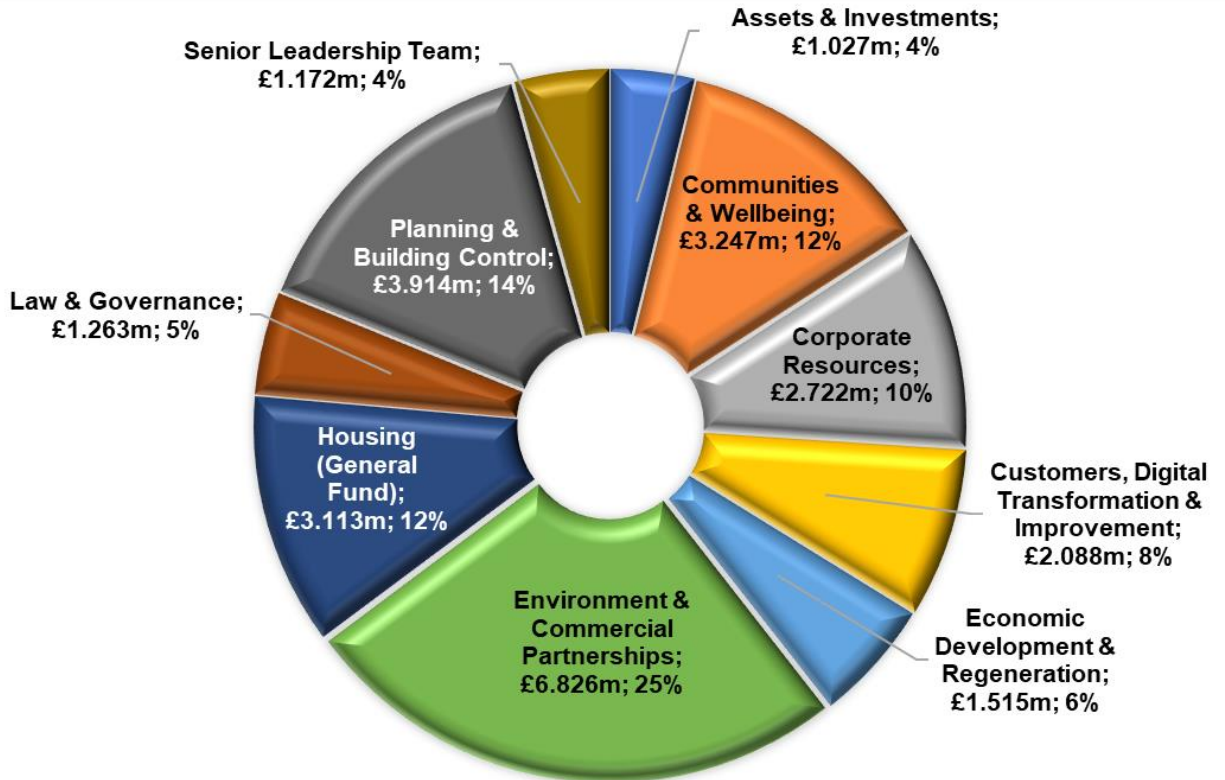


Chart 6: Expenditure by type (excl. housing benefits) 2022/23 (£29.2m)

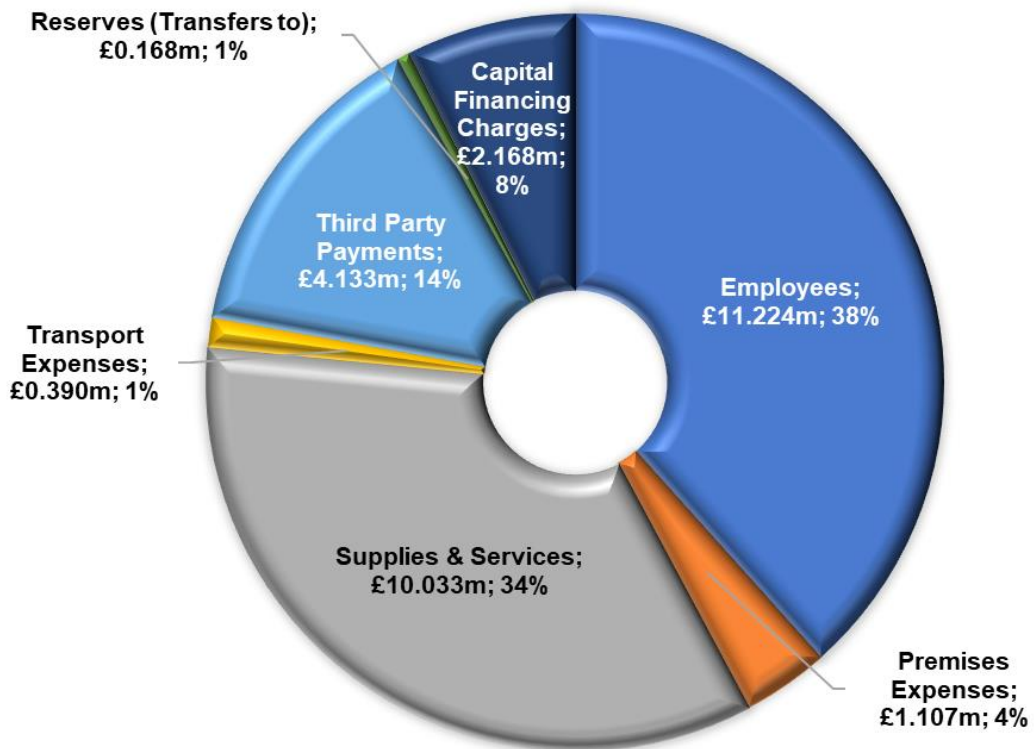


Chart 7: Total Income (excl. housing benefits) 2022/23 (£35.1m)

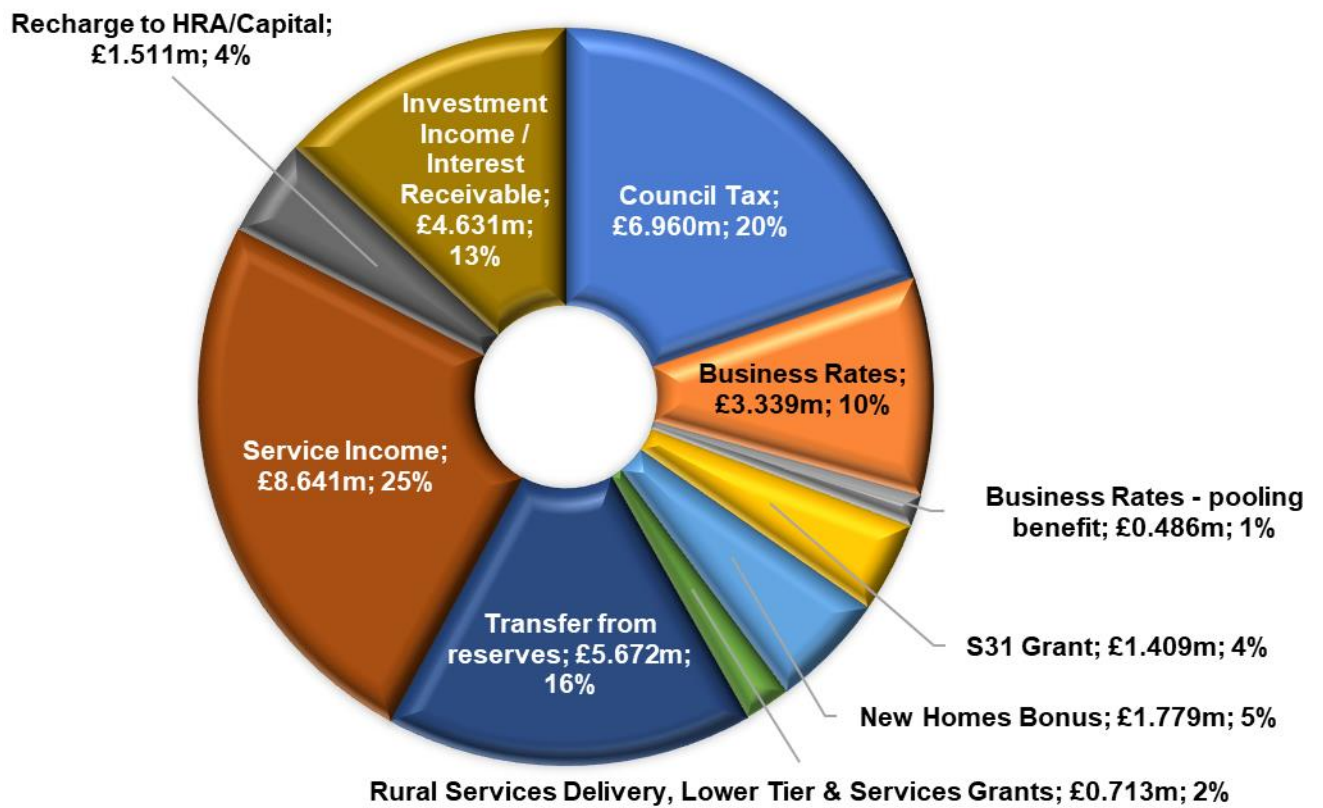
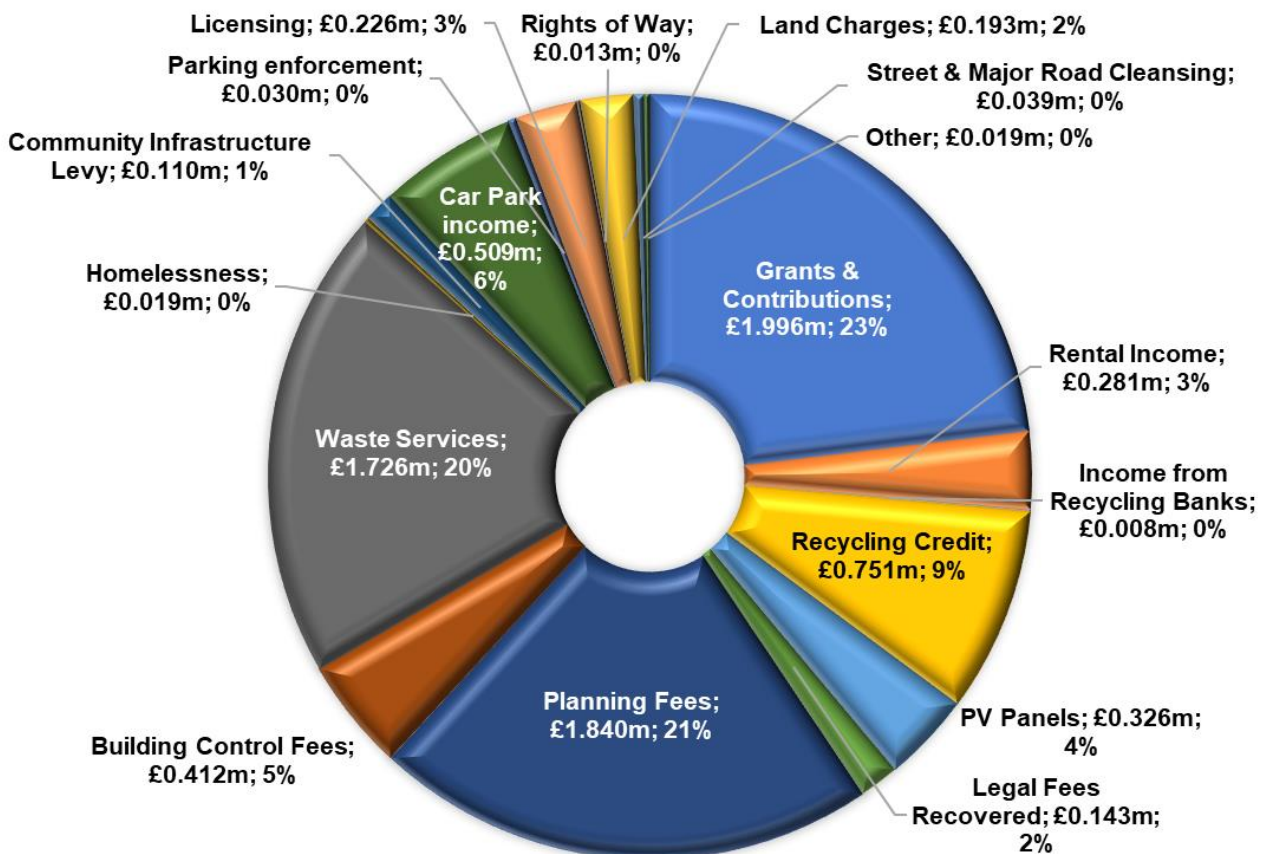


Chart 8: Service Income (excl. housing benefits) 2022/23 (£8.6m)



Reserves

- 5.17 Section 43 of the Local Government Finance Act 1992 requires that, when setting the budget for the forthcoming year the Council must have regard to the level of reserves needed to provide enough resources to finance estimated future expenditure plus any appropriate allowances that should be made for contingencies.
- 5.18 Reserves only provide one-off funding, so the Council should avoid using reserves to meet regular recurring financial commitments.
- 5.19 In 2022/23 the Council is using £5.7m from earmarked reserves against specific service expenditure and projects. This includes £4.7m for strategic priorities and £250k for Locality Budgets from the Growth & Efficiency Fund, £70k for planning legal costs and £100k for the Joint Local Plan from planning reserves and £571k for staff costs.
- 5.20 The Council is also transferring £188k to earmarked reserves in 2022/23 to fund future years' specific service expenditure, made up of £20k to the elections reserve, £91k to the homelessness reserve and £76k to the neighbourhood planning reserve.
- 5.21 Table 5 below shows the earmarked reserves balance from 31 March 2021, forecast through to 31 March 2023.

Table 5: Reserves

Reserve	Balance 31/03/2021 £'000	Forecast Balance 31/03/22 £'000	Budget Transfer to £'000	Budget Transfer From £'000	Forecast Balance 31/03/23 £'000
Business Rates & Council Tax	4,859	4,237			4,237
Business Rates Retention Pilot (BRRP)	814	625		(25)	600
Carry Forwards	717	-			-
Climate Change and Biodiversity	500	961		(21)	940
Commercial Development Risk Management	2,500	4,131	1,865		5,996
Community Housing Fund	217	192		(29)	163
Commuted Maintenance Payments	638	576		(28)	548
COVID 19	862	503		(184)	318
COVID 19 Business Recovery		104			104
Elections Equipment	35	35			35
Elections Fund	49	69	20		89
Government Grants	234	239		(23)	216
Growth and Efficiency Fund	6,849	497	4,051	(1,014)	3,534
Homelessness	328	237		(75)	163
Joint Local Plan	100	100		(100)	-
Neighbourhood Planning Grants	109	78	76	(29)	125
Planning (Legal)	572	797		(70)	727
Planning Enforcement	45	95			95
Repair & Renewals	293	293			293
Rough Sleepers	26	26			26
Strategic Planning	50	50			50
Temporary Accommodation	258	338	91	(43)	386
Waste	115	115			115
Welfare Benefits Reform	7	7			7
Well-being	248	1,191		(1,049)	142
Economy	-	1,000		(1,000)	-
Housing	-	1,000		(1,000)	-
Communities	-	1,000		(1,000)	-
Total	20,422	18,494	6,104	(5,691)	18,906

Medium Term Projections

- 5.22 Table 6 below shows the estimated cost of services by service area and the forecast position for the period 2023/24 to 2025/26.
- 5.23 The position for 2022/23 is a £3.351m surplus, after allowing for a £700k transfer to the Growth & Efficiency Fund for spend on the Council's Strategic Priorities agreed by Cabinet on 1 November 2021 and a £1.865m transfer to the Commercial Development Risk Management Reserve for Gateway 14 accrued interest.
- 5.24 Over the next three years the net cost of service increases by £2.2m, mainly due to pay award, increments, inflationary increases on major contracts, capital financing charges and a projected reduction in income from Gateway 14. The estimated tax base growth over the same period (£391k) only covers 18% of this increase and the Council loses £1.38m in NHB funding and £259k in other grants. This leaves a surplus of £1.694m by 2025/26.

Table 6: Forecast Surplus 2023/24 - 2025/26

Description	2022/23 Budget £000	2023/24 Forecast £000	2024/25 Forecast £000	2025/26 Forecast £000
Strategic Property	344	216	181	190
The Councils' Companies	92	95	98	102
Total Assets & Investments	436	311	279	292
Communities	701	725	741	757
Leisure	228	(22)	(42)	(57)
Total Communities & Well-Being	929	703	699	700
Finance, Commissioning & Procurement	1,710	1,734	1,784	1,835
Human Resources & Organisational Development	461	549	564	581
Total Corporate Resources	2,172	2,283	2,348	2,416
Communications	177	183	189	196
Customer Operations	607	631	656	682
ICT	913	929	946	965
Strategic Policy, Performance and Insight	282	407	423	440
Total Customers, Digital Transformation & Improvement	1,978	2,150	2,215	2,283
Open for Business	298	339	353	367
Total Economic Development & Regeneration	298	339	353	367
Health & Safety, Business Continuity & Emergency Planning	182	207	212	218
Public Protection	692	722	751	781
Public Realm	1,016	1,062	1,110	1,160
Recycling, Waste & Fleet	1,401	1,483	1,506	1,562
Service Improvement	68	71	74	77
Total Environment & Commercial Partnerships	3,358	3,544	3,652	3,797
Housing Solutions	659	695	732	771
Total Housing	659	695	732	771
Electoral Services & Land Charges	75	77	84	91
Governance & Civic Off	381	400	419	439
Internal Audit, Risk & Data	85	87	90	93
Shared Legal Service	386	396	406	417
Total Law & Governance	927	960	999	1,040
Building Control	140	162	184	207
Chief Planning Officer	539	624	699	777
Strategic Planning	607	611	724	628
Total Planning & Building Control	1,287	1,397	1,608	1,613
Senior Leadership Team	700	726	753	781
Total Senior Leadership Team	700	726	753	781
Net Service Expenditure	12,743	13,107	13,638	14,060
Recharge to HRA / Capital	(1,511)	(1,538)	(1,565)	(1,593)
Investment Income	(4,631)	(5,106)	(4,855)	(4,284)
Capital Financing Charges	2,168	2,633	2,727	2,830
Total cost of services	8,769	9,096	9,944	11,013
Total Funding	(14,685)	(13,247)	(13,110)	(12,707)
<u>Transfers to Reserves</u>				
Commercial Development Risk Reserve	1,865			
Growth & Efficiency Fund (Strategic Priorities Loan)	700			
Growth & Efficiency Fund	3,351			
2022/23	0	0	0	0
2023/24		(4,151)	(4,151)	(4,151)
2024/25			986	986
2025/26				1,471
Shortfall in funding / (Surplus Funds)	0	(4,151)	(3,165)	(1,694)

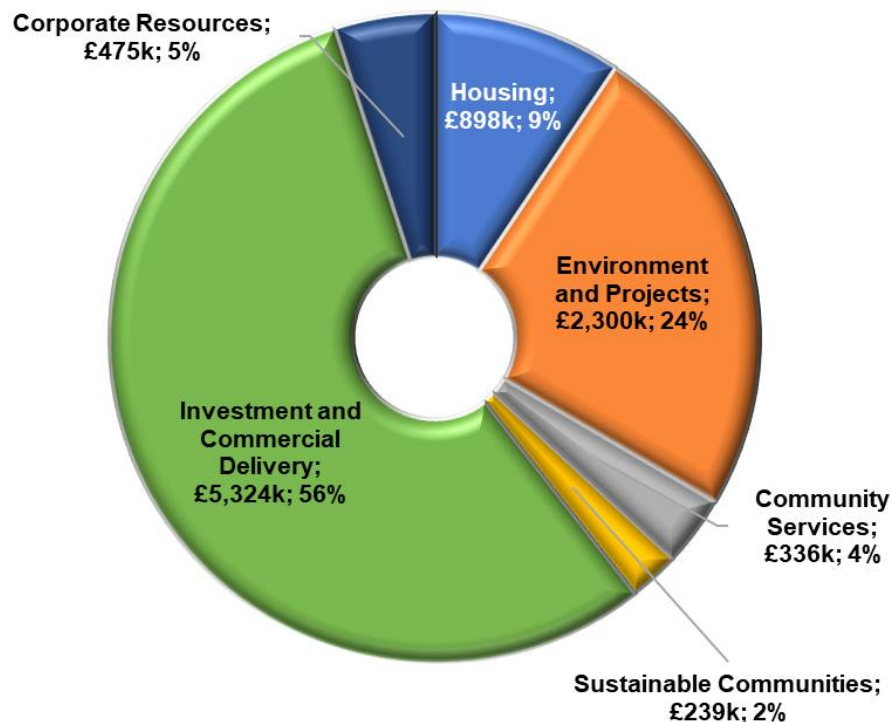
5.25 Despite these surpluses, the Council acknowledges that it can still benefit from further work across the organisation to create efficiencies through driving down cost and cutting out work that does not add value. Opportunities exist in terms of improving digitisation and automation of some processes. A corporate programme of work will be developed early in 2022 to enable some broad-based numbers to be put against a 2-3 year programme.

6. FEES AND CHARGES

6.1 Fees and charges have been reviewed by budget holders as part of this budget setting process and a separate report was presented to Cabinet in January 2022. The impact of the charges agreed have been built into the budget for 2022/23.

7. CAPITAL PROGRAMME

7.1 The detailed Capital Programme is attached at Appendix A. The new capital allocation for the 2022/23 budget totals £9.6m and is shown in Chart 9 below. Along with an anticipated carry forward of £19.5m at the end of the current financial year, the total capital programme for next year could be in the region of £28.5m.



7.2 The most significant items for new planned spend are the replacement of the Council's refuse freighters in 2022/23 and funding for Mid Suffolk Growth to undertake housing developments at sites already in progress or ones currently under negotiation for purchase over the next 3 years as well as purchasing additional land for further development. Funding is also included to continue the range of annual capital initiatives such as housing and community grants.

7.3 Following review by Joint Audit and Standards Committee in January 2022, the Capital and Investment Strategy will have further details of the Council's borrowing capacity and the impacts of the capital programme, this will be presented to Council in February along with the final budget report.

8. LINKS TO THE CORPORATE PLAN

- 8.1 Ensuring that the Council makes best use of its resources is what underpins the ability to achieve the priorities set out in the Corporate Plan and aligns to the corporate outcomes against a backdrop of efficiency, and sound financial robustness. The underlying principle of the Medium-Term Financial Strategy is to be financially sustainable.

9. FINANCIAL IMPLICATIONS

- 9.1 These are detailed in the report.

10. LEGAL IMPLICATIONS

- 10.1 The provisions of the Local Government Finance Act 1992 (LGFA 1992) requires the Council to set a balanced budget with regard to the advice of its Chief Finance Officer (Section 151) in relation to the level of reserves and the risks associated with the proposed budget.

11. RISK MANAGEMENT

- 11.1 This report is most closely linked with the Council's Significant Risk No. 13 – We may be unable to respond in a timely and effective way to financial demands and also Corporate Risk No. 5E05 – if the Finance Strategy is not in place with a balanced position over the medium term the Councils will not be able to deliver the core objectives and service delivery may be at risk of not being delivered. Other key risks are set out below:

Risk Description	Likelihood	Impact	Mitigation Measures
If Government funding does not keep pace with demand and other pressures, then the Council will have to consider how it continues to fund existing service levels	2 - Unlikely	3 - Bad	The Council will continue to lobby Government both directly and via networks such as the District Councils' Network (DCN) and the Rural Services Network (RSN)
If demand pressures and cost inflation exceed forecasts, then the Council could be in an overspend position at the year-end	2 – Unlikely	2 - Noticeable	Service areas will identify and analyse data that enable the best possible forecasts to be determined and act where possible to contain costs in year to offset the impact

If income levels are below forecast, then the Council could be in an overspend position at the year-end	2 – Unlikely	2 - Noticeable	Service areas will identify and analyse data that enable the best possible forecasts to be determined and act where possible to generate income to anticipated levels
If the financial impact of COVID19 continues over an extended period, then the Council will need to use and then replenish available reserves	2 – Unlikely	2 - Noticeable	Continue to monitor the situation closely to assess whether the COVID reserve is sufficient to meet any funding gap
If borrowing costs exceed projections, then the Council may need to fund the excess costs from reserves at year-end	2 – Unlikely	2 - Noticeable	Discussions with the Council's treasury management adviser on interest rates to be used when setting the budgets
If capital projects exceed budgeted figures, then the Council will achieve less with the resources available	2 – Unlikely	2 - Noticeable	Capital projects will include an appropriate level of contingency that will cover potential increases in costs

12. CONSULTATIONS

- 12.1 Consultations have taken place with Assistant Directors, Corporate Managers and other Budget Managers as appropriate.

13. EQUALITY ANALYSIS

- 13.1 Assistant Directors and Corporate Managers will undertake an Equality Impact Assessment for any individual budget proposals that have the potential to impact any of the protected characteristics.

14. ENVIRONMENTAL IMPLICATIONS

- 14.1 Assistant Directors, Corporate Managers and other Budget Managers will continue to consider the environmental impact of their budgets and take the opportunity to reduce their carbon footprint as opportunities arise.

- 14.2 In support of the Council's commitment to be Carbon Neutral by 2030, several initiatives have and are being undertaken from a combination of the Council's own resources and those secured from external sources. Some of these are set out below.
- 14.3 A solar multi-function carport to generate electricity is being installed at Stowmarket Leisure Centre. The CO₂ savings are nearly 9 times the volume of the Royal Albert Hall and it will generate enough power to supply 52 average homes in Stowmarket.
- 14.4 The Council's leisure centres have been successfully transferred to certified low carbon tariffs for electricity use.
- 14.5 £1.4m of funding has been secured from the Government's Public Sector Decarbonisation Fund for carbon-saving measures at council leisure centres and other buildings including solar panels and air source heat pumps.
- 14.6 The new Needham Market Lake visitors centre & café has been designed to complement the surrounding natural environment with several green features including bird boxes, solar panels, sustainable drainage, an air source heat pump, and the use of sustainable building materials.

15. APPENDICES

Title	Location
Appendix A –Capital Programme	Attached
Appendix B - Budget, Funding and Council Tax Requirements and Robustness of Estimates and Adequacy of Reserves	Attached
Appendix C - Budget Book 2022/23	Attached

16. BACKGROUND DOCUMENTS

Provisional Local Government Finance Settlement

General Fund Financial Monitoring 2021/22 – Quarter 2 - MCa/21/29

CAPITAL PROGRAMME 2022/23 TO 2025/26

Mid Suffolk District Council - General Fund Capital Budgets	2021/22 Anticipated C/Fwds	2022/23 Budget for Approval	2022/23 Total Spend Required	2023/24 Forecast	2024/25 Forecast	2025/26 Forecast
2021/22 to 2024/25	(A)	(B)	(A + B)			
	£'000	£'000		£'000	£'000	£'000
Housing						
Mandatory Disabled Facilities Grant	234	698	932	698	698	698
Renovation/Home Repair Grants	44	100	144	100	100	100
Empty Homes Grant	134	100	234	100	100	100
Grants for Affordable Housing	170	0	170	0	0	0
Total Housing	583	898	1,481	898	898	898
Environment and Projects						
Replacement Refuse Freighters-Jnt Scheme	0	2,200	2,200	188	0	0
Bins	0	100	100	100	100	100
Total Environment and Projects	0	2,300	2,300	288	100	100
Communities and Public Access						
Vehicle and Plant Renewals	0	90	90	90	90	90
Leases on Car Parks (under new IFRS16)	0	91	91	0	0	0
Planned Maintenance / Enhancements-Car Parks	0	95	95	40	40	40
Needham Lake Footpath	0	60	60	0	0	0
Total Community Services	0	336	336	130	130	130
Sustainable Communities						
Play equipment	92	50	142	50	50	50
Community Development Grants	90	189	279	189	189	189
Total Sustainable Communities	182	239	421	239	239	239
Investment and Commercial Delivery						
Planned Maintenance / Enhancements - Corporate Buildings	0	330	330	30	30	30
Leases on Property (under new IFRS16)	0	439	439	0	0	0
Strategic Investment Fund	3,000	0	3,000	0	0	0
Wingfield Barns	0	20	20	20	20	20
Regeneration Fund	31	0	31	0	0	0
Regeneration Fund - HQ Sites	216	0	216	0	0	0
Gateway 14	15,250	0	15,250	0	0	0
Mid Suffolk Growth	0	4,250	4,250	5,250	3,500	0
Business Hub, Cross Street, Eye	0	285	285	0	0	0
Total Investment and Commercial Delivery	18,498	5,324	23,821	5,300	3,550	50
ICT & Customer						
Replacement Finance Management System	0	325	325	75	0	0
ICT - Hardware / Software costs	200	150	350	150	150	150
Total Corporate Resources	200	475	675	225	150	150
TOTAL General Fund Capital Spend	19,462	9,572	29,034	7,080	5,067	1,567
GF Financing						
External Grants and contributions	234	698	932	698	698	698
s106	0	15	15	0	0	0
Capital Receipts	0	0	0	0	0	0
Transformation / GEF / BRRP Reserves	3,000	285	3,285	0	0	0
Borrowing	16,228	8,574	24,802	6,382	4,369	869
Other Reserves	0	0	0	0	0	0
Total GF Capital Financing	19,462	9,572	29,034	7,080	5,067	1,567

Budget and Council Tax Resolutions 2022/23

Summary of Budget 2022/23

	2022/23 Budget Requirement £	2022/23 Council Tax at Band D £	2021/22 Budget Requirement £
Mid Suffolk District Council			
General Fund Budget Requirement District Council Purposes	10,005,323	257.52	9,534,400
Estimated Parish/Town Council Precepts (net of Council Tax Support Scheme Grant)	3,212,636	82.69	3,052,822
	13,217,959	340.20	12,587,222
Settlement Funding from Government	(1,894,610)	(48.76)	(1,866,900)
Rural Services Delivery Grant	(454,370)	(11.69)	(454,365)
Services Grant	(156,780)	(4.04)	-
Lower Tier Services Grant	(102,010)	(2.63)	(227,810)
Local Council Tax Support Grant	-	-	(102,105)
Adjustment for anticipated surplus on Business Rates Collection Fund	(438,030)	(11.27)	(470,500)
Adjustment for anticipated surplus on Council Tax Collection Fund	(292,560)	(7.53)	(31,220)
MSDC's basic amount under section 33 of the 1992 Local Government Act	9,879,599	254.28	9,434,322
LESS: <i>Estimated</i> Parish/Town Council Precepts	(3,212,636)	(82.69)	(3,052,822)
Basic amount under s. 34 of the 1992 Act for dwellings to which no special items relate. (see section 3 below)	6,666,963	171.59	6,381,500
<i>Anticipated</i> Suffolk County Council precept requirement (see section 7 below)	55,906,675	1,438.92	54,284,165
<i>Anticipated</i> Police and Crime Commissioners Requirement (see section 7 below)	9,623,166	247.68	9,235,022
<i>Estimated</i> Basic amount for areas where there are no special items.	72,196,804	1,858.19	69,900,687

Council Tax Resolution 2022/23

1. It is a requirement for the billing authority to calculate a council tax requirement for the year as opposed to its budget requirement.
2. It be noted that the Council, as delegated to the Section 151 Officer, calculated the taxbase:
 - a) for the whole Council area as 38,853.22 and,
 - b) for dwellings in those parts of its area to which a Parish precept relates as further detailed in Appendix B.
3. The council tax requirement for the Council's own purposes for 2022/23 (excluding Parish precepts) is £6,666,963.
4. That the following amounts be calculated for the year 2022/23 in accordance with Sections 31 to 36 of the Act:

(a)	Being the aggregate of the amounts which the Council estimates for the items set out in Section 31A(2) of the Act taking into account all precepts issued to it by Parish Councils (gross expenditure)	57,402,614
(b)	Being the aggregate of the amounts which the Council estimates for items set out in Section 31(A)(3) of the Act (gross income)	(47,523,017)
(c)	Being the amount by which the aggregate at 3 a) above exceeds the aggregate at 3 b) above, calculated by the Council, in accordance with Section 31A(4) of the Act, as its Council Tax requirement for the year. (Item R in the formula in Section 31A(4) of the Act) (net expenditure)	9,879,597
(d)	Being the amount at 4(c) above (item R) all divided by item T (2(a) above), calculated by the Council, in accordance with Section 31B(1) of the Act, as the basic amount of its council tax for the year (including Parish precepts) (average council tax)	254.28
(e)	Being the aggregate amount of all special items (Parish precepts) referred to in Section 34(1) of the Act (as per Appendix B)	3,212,636
(f)	Being the amount at 4(d) above less the result given by dividing the amount at 4(e) above by item T (2(a) above) calculated by the Council, in accordance with Section 34(2) of the Act, as the basic amount of its council tax for the year for dwellings in those parts of its area to which no Parish precept relates (basic council tax)	171.59

5. To note that Suffolk County Council and the Police and Crime Commissioner have issued precepts to the Council in accordance with section 40 of the Local Government Finance Act 1992 for each category of dwellings in the Council's area as indicated in Section 7 below.

6. That the Council in accordance with Sections 30 and 36 of the Local Government Finance Act 1992, hereby sets the aggregate amounts shown in the table below and further in Appendix B as the amounts of council tax for 2022/23 for each part of its area and for each of the categories of dwellings.
7. Since the Cabinet meeting on 7 February 2021, the precept levels of other precepting bodies have been received. These are detailed below;

a) Suffolk County Council

Suffolk County Council has set their precept at £55,906,675. This results in a Band D council tax of £1,438.92.

b) Suffolk Police and Crime Commissioner

The Police and Crime Commissioner has set their precept at £9,623,166. This results in a Band D council tax of £247.68.

c) Mid Suffolk District Council

The General Fund council tax requirement for Mid Suffolk District Council is based on no increase in council tax at £171.59 for a Band D property.

d) Aggregated council tax requirement

The aggregated council tax requirement for Suffolk County Council, Suffolk Police and Crime Commissioner and Babergh District Council results in a Band D council tax of £1,858.19.

	Suffolk County Council	Police and Crime Commissioner	Mid Suffolk District Council	Aggregated Council Tax requirement
Valuation Bands	£	£	£	£
A	959.28	165.12	114.39	1,238.79
B	1,119.16	192.64	133.46	1,445.26
C	1,279.04	220.16	152.52	1,651.72
D	1,438.92	247.68	171.59	1,858.19
E	1,758.68	302.72	209.72	2,271.12
F	2,078.44	357.76	247.85	2,684.05
G	2,398.20	412.80	285.98	3,096.98
H	2,877.84	495.36	343.18	3,716.38

8. The Town and Parish Council Precepts for 2022/23 are detailed further in Appendix B and total £3,212,636. The increase in the average Band D for Town and Parish Councils is 5.23% and results in an average Band D council tax figure of £82.69 for 2022/23.

APPENDIX B

Council Taxbase for Parishes and District – 2022/23

PARISH	COUNCIL TAX BASE		% Change
	2021/22	2022/23	
Akenham	22.98	23.79	3.5%
Ashbocking	138.60	143.28	3.4%
Ashfield-cum-Thorpe	98.50	98.75	0.3%
Aspall	29.87	30.31	1.5%
Athelington	19.74	20.07	1.7%
Bacton	449.54	474.32	5.5%
Badley	35.10	36.00	2.6%
Badwell Ash	322.01	331.70	3.0%
Barham	537.03	534.00	-0.6%
Barking	173.41	181.77	4.8%
Battisford	246.71	262.88	6.6%
Baylham	114.14	128.38	12.5%
Bedfield	160.59	166.50	3.7%
Bedingfield	99.49	99.18	-0.3%
Beyton	310.45	311.18	0.2%
Botesdale	272.61	289.50	6.2%
Braiseworth	30.79	31.31	1.7%
Bramford	906.08	954.64	5.4%
Brome and Oakley	204.36	226.87	11.0%
Brundish	75.42	79.55	5.5%
Burgate	66.99	69.40	3.6%
Buxhall	161.97	167.08	3.2%
Claydon	746.75	762.58	2.1%
Coddenham	275.28	282.04	2.5%
Combs	313.42	311.09	-0.7%
Cotton	241.64	246.37	2.0%
Creting St Mary	311.85	339.28	8.8%
Creting St Peter	99.03	101.56	2.6%
Crowfield	158.54	161.84	2.1%
Darmsden	17.19	17.27	0.5%
Debenham	812.19	832.74	2.5%
Denham	80.63	83.43	3.5%
Drinkstone	282.78	285.98	1.1%
Earl Stonham	255.04	262.15	2.8%
Elmswell	1,506.27	1,662.91	10.4%
Eye	773.99	801.43	3.5%

PARISH	COUNCIL TAX BASE		% Change
	2021/22	2022/23	
Felsham	177.38	181.57	2.4%
Finningham	211.62	214.38	1.3%
Flowton	48.67	49.67	2.1%
Framsden	139.78	141.07	0.9%
Fressingfield	418.29	432.92	3.5%
Gedding	52.15	54.59	4.7%
Gipping	26.23	26.62	1.5%
Gislingham	447.50	467.88	4.6%
Gosbeck	87.85	88.72	1.0%
Great Ashfield	151.16	153.09	1.3%
Great Blakenham	770.73	838.71	8.8%
Great Bricett	213.38	218.28	2.3%
Great Finborough	321.07	323.12	0.6%
Harleston	64.69	67.21	3.9%
Haughley	571.86	604.83	5.8%
Helmingham	66.69	68.43	2.6%
Hemingstone	104.88	109.55	4.5%
Henley	227.64	232.37	2.1%
Hessett	205.08	211.58	3.2%
Hinderclay	120.29	128.61	6.9%
Horham	124.93	128.27	2.7%
Hoxne	355.32	369.00	3.9%
Hunston	56.24	56.73	0.9%
Kenton	95.92	99.25	3.5%
Langham	40.70	42.55	4.5%
Laxfield	387.39	423.24	9.3%
Little Blakenham	108.98	111.69	2.5%
Little Finborough	25.91	26.23	1.2%
Mellis	199.90	205.05	2.6%
Mendham	174.22	180.88	3.8%
Mendlesham	561.55	583.68	3.9%
Metfield	171.51	178.42	4.0%
Mickfield	87.87	90.08	2.5%
Monk Soham	73.30	76.71	4.7%
Needham Market	1,607.92	1,709.93	6.3%
Nettlestead	37.18	38.63	3.9%
Norton	426.78	461.00	8.0%

APPENDIX B

Council Taxbase for Parishes and District – 2022/23

PARISH	COUNCIL TAX BASE		% Change
	2021/22	2022/23	
Occold	199.85	208.41	4.3%
Offton	150.48	155.09	3.1%
Old Newton with Dagwo	427.72	442.40	3.4%
Onehouse	284.12	319.41	12.4%
Palgrave	375.16	386.53	3.0%
Pettaugh	88.25	89.35	1.2%
Rattlesden	377.68	412.30	9.2%
Redgrave	259.11	264.64	2.1%
Redlingfield	51.64	53.80	4.2%
Rickinghall Inferior	163.67	169.59	3.6%
Rickinghall Superior	318.73	333.86	4.7%
Ringshall	261.12	268.97	3.0%
Rishangles	37.65	38.38	1.9%
Shelland	26.49	26.01	-1.8%
Somersham	242.08	254.36	5.1%
Southolt	29.67	29.39	-0.9%
Stoke Ash	84.14	82.87	-1.5%
Stonham Aspal	238.69	242.80	1.7%
Stonham Parva	136.45	136.69	0.2%
Stowlangtoft	88.63	89.13	0.6%
Stowmarket	6,636.37	6,812.28	2.7%
Stowupland	750.05	843.48	12.5%
Stradbroke	564.77	573.96	1.6%
Stuston	85.82	87.56	2.0%
Syleham	91.74	95.95	4.6%

PARISH	COUNCIL TAX BASE		% Change
	2021/22	2022/23	
Tannington	40.75	41.34	1.4%
Thorndon	316.17	343.70	8.7%
Thornham Magna	79.90	82.26	3.0%
Thornham Parva	24.67	28.94	17.3%
Thrandeston	72.63	76.22	4.9%
Thurston	1,220.96	1,380.20	13.0%
Thwaite	61.38	61.87	0.8%
Tostock	208.66	220.26	5.6%
Walsham-le-Willows	480.75	483.79	0.6%
Wattisfield	194.44	201.02	3.4%
Westhorpe	81.39	83.88	3.1%
Wetherden	239.71	246.24	2.7%
Wetheringsett-cum-Brockford	278.25	287.04	3.2%
Weybread	178.64	183.86	2.9%
Whitton	30.26	31.32	3.5%
Wickham Skeith	135.67	138.77	2.3%
Wilby	133.72	137.84	3.1%
Willisham	106.60	106.75	0.1%
Wingfield	144.66	147.72	2.1%
Winston	69.60	70.15	0.8%
Woolpit	807.54	838.06	3.8%
Worlingworth	318.31	328.61	3.2%
Wortham	335.43	343.37	2.4%
Wyverstone	137.44	146.02	6.2%
Yaxley	208.56	221.11	6.0%
TOTAL TAX BASE	37,189.71	38,853.22	4.5%

APPENDIX B

Precepts and Council Tax Band D for Parishes

Parish	2021/22	Tax Base	Council Tax Band D	2022/23	Tax Base	Council Tax Band D	Increase / Decrease (-)
	Parish Precept			Parish Precept			
	£		£	£		£	£
Akenham	-	22.98	-	-	23.79	-	0.00
Ashbocking	2,000.00	138.60	14.43	2,000.00	143.28	13.96	-0.47
Ashfield-cum-Thorpe	3,038.85	98.50	30.85	3,096.58	98.75	31.36	0.51
Aspall	-	29.87	-	-	30.31	-	0.00
Athelington	409.35	19.74	20.74	405.89	20.07	20.22	-0.52
Bacton	23,125.83	449.54	51.44	28,905.85	474.32	60.94	9.50
Badley	-	35.10	-	-	36.00	-	0.00
Badwell Ash	23,297.00	322.01	72.35	23,995.00	331.70	72.34	-0.01
Barham	27,300.00	537.03	50.84	27,300.00	534.00	51.12	0.28
Barking	11,000.00	173.41	63.43	12,395.00	181.77	68.19	4.76
Battisford	12,320.00	246.71	49.94	13,050.00	262.88	49.64	-0.30
Baylham	-	114.14	-	-	128.38	-	0.00
Bedfield	4,100.00	160.59	25.53	4,100.00	166.50	24.62	-0.91
Bedingfield	1,620.00	99.49	16.28	1,620.00	99.18	16.33	0.05
Beyton	16,622.00	310.45	53.54	23,186.01	311.18	74.51	20.97
Botesdale	35,800.00	272.61	131.32	44,100.00	289.50	152.33	21.01
Braiseworth	-	30.79	-	-	31.31	-	0.00
Bramford	71,616.00	906.08	79.04	76,926.00	954.64	80.58	1.54
Brome and Oakley	6,630.00	204.36	32.44	7,500.00	226.87	33.06	0.62
Brundish	3,796.51	75.42	50.34	4,125.00	79.55	51.85	1.51
Burgate	2,971.45	66.99	44.36	3,093.64	69.40	44.58	0.22
Buxhall	4,838.91	161.97	29.88	6,345.33	167.08	37.98	8.10
Claydon	39,883.82	746.75	53.41	40,728.25	762.58	53.41	0.00
Coddenham	32,227.00	275.28	117.07	32,223.84	282.04	114.25	-2.82
Combs	9,000.00	313.42	28.72	9,000.00	311.09	28.93	0.21
Cotton	6,500.00	241.64	26.90	8,329.79	246.37	33.81	6.91
Creeting St Mary	10,028.00	311.85	32.16	11,130.00	339.28	32.80	0.64
Creeting St Peter	5,176.00	99.03	52.27	5,200.00	101.56	51.20	-1.07
Crowfield	2,750.00	158.54	17.35	2,800.00	161.84	17.30	-0.05
Darmsden	-	17.19	-	-	17.27	-	0.00
Debenham	78,686.00	812.19	96.88	80,675.00	832.74	96.88	0.00
Denham	3,192.00	80.63	39.59	3,418.00	83.43	40.97	1.38
Drinkstone	8,920.00	282.78	31.54	9,197.00	285.98	32.16	0.62
Earl Stonham	6,557.00	255.04	25.71	6,808.00	262.15	25.97	0.26
Elmswell	163,514.00	1,506.27	108.56	189,555.00	1,662.91	113.99	5.43
Eye	131,076.00	773.99	169.35	131,076.00	801.43	163.55	-5.80
Felsham	6,946.00	177.38	39.16	6,946.00	181.57	38.26	-0.90
Finningham	7,243.00	211.62	34.23	7,243.00	214.38	33.79	-0.44
Flowton	-	48.67	-	-	49.67	-	0.00
Framsden	9,754.88	139.78	69.79	9,940.22	141.07	70.46	0.67
Fressingfield	22,370.00	418.29	53.48	33,000.00	432.92	76.23	22.75
Gedding	1,000.00	52.15	19.18	1,045.00	54.59	19.14	-0.04
Gipping	1,581.66	26.23	60.30	1,623.51	26.62	60.99	0.69
Gislingham	16,210.00	447.50	36.22	16,372.00	467.88	34.99	-1.23
Gosbeck	1,500.00	87.85	17.07	1,500.00	88.72	16.91	-0.16
Great Ashfield	2,450.00	151.16	16.21	2,700.00	153.09	17.64	1.43
Great Blakenham	48,478.00	770.73	62.90	48,478.00	838.71	57.80	-5.10
Great Bricett	10,481.00	213.38	49.12	10,500.00	218.28	48.10	-1.02
Great Finborough	13,390.00	321.07	41.70	14,136.00	323.12	43.75	2.05
Harleston	1,819.00	64.69	28.12	1,892.00	67.21	28.15	0.03
Haughley	46,056.00	571.86	80.54	49,442.00	604.83	81.75	1.21
Helmingham	2,500.00	66.69	37.49	2,600.00	68.43	38.00	0.51
Hemingstone	2,040.00	104.88	19.45	2,380.00	109.55	21.73	2.28
Henley	11,832.00	227.64	51.98	12,437.85	232.37	53.53	1.55
Hessett	10,048.00	205.08	49.00	10,349.00	211.58	48.91	-0.09
Hinderclay	5,150.00	120.29	42.81	5,150.00	128.61	40.04	-2.77
Horham	2,590.65	124.93	20.74	2,594.11	128.27	20.22	-0.52
Hoxne	16,155.00	355.32	45.47	14,000.00	369.00	37.94	-7.53
Hunston	-	56.24	-	-	56.73	-	0.00
Kenton	1,600.00	95.92	16.68	1,600.00	99.25	16.12	-0.56
Langham	-	40.70	-	-	42.55	-	0.00
Laxfield	42,430.00	387.39	109.53	46,357.00	423.24	109.53	0.00
Little Blakenham	6,500.00	108.98	59.64	6,828.00	111.69	61.13	1.49
Little Finborough	-	25.91	-	-	26.23	-	0.00

Precepts and Council Tax Band D for Parishes

Parish	2021/22	Tax Base	Council Tax Band D	2022/23	Tax Base	Council Tax Band D	Increase / Decrease (-)
	Parish Precept			Parish Precept			
	£		£	£		£	£
Mellis	7,900.00	199.90	39.52	7,900.00	205.05	38.53	-0.99
Mendham	6,600.00	174.22	37.88	6,600.00	180.88	36.49	-1.39
Mendlesham	40,000.00	561.55	71.23	44,000.00	583.68	75.38	4.15
Metfield	5,750.00	171.51	33.53	5,750.00	178.42	32.23	-1.30
Mickfield	5,000.00	87.87	56.90	4,436.25	90.08	49.25	-7.65
Monk Soham	2,250.00	73.30	30.70	2,250.00	76.71	29.33	-1.37
Needham Market	128,484.71	1,607.92	79.91	140,739.72	1,709.93	82.31	2.40
Nettlestead	-	37.18	-	-	38.63	-	0.00
Norton	22,000.00	426.78	51.55	25,000.00	461.00	54.23	2.68
Occold	8,800.00	199.85	44.03	8,800.00	208.41	42.22	-1.81
Offton	5,407.98	150.48	35.94	5,923.08	155.09	38.19	2.25
Old Newton with Dagworth	25,791.34	427.72	60.30	26,981.28	442.40	60.99	0.69
Onehouse	13,500.00	284.12	47.52	15,180.00	319.41	47.53	0.01
Palgrave	16,000.00	375.16	42.65	17,500.00	386.53	45.27	2.62
Pettaugh	2,940.00	88.25	33.31	2,976.00	89.35	33.31	0.00
Rattlesden	20,732.00	377.68	54.89	22,632.00	412.30	54.89	0.00
Redgrave	19,800.00	259.11	76.42	21,800.00	264.64	82.38	5.96
Redlingfield	-	51.64	-	-	53.80	-	0.00
Rickingham Inferior	9,635.63	163.67	58.87	10,375.16	169.59	61.18	2.31
Rickingham Superior	18,764.37	318.73	58.87	20,424.84	333.86	61.18	2.31
Ringshall	7,900.00	261.12	30.25	8,462.00	268.97	31.46	1.21
Rishangles	-	37.65	-	-	38.38	-	0.00
Shelland	-	26.49	-	-	26.01	-	0.00
Somersham	17,308.00	242.08	71.50	18,187.00	254.36	71.50	0.00
Southolt	-	29.67	-	-	29.39	-	0.00
Stoke Ash	4,113.33	84.14	48.89	3,956.85	82.87	47.75	-1.14
Stonham Aspal	5,500.00	238.69	23.04	5,500.00	242.80	22.65	-0.39
Stonham Parva	6,582.00	136.45	48.24	6,692.00	136.69	48.96	0.72
Stowlangtoft	3,300.00	88.63	37.23	3,300.00	89.13	37.02	-0.21
Stowmarket	1,108,578.76	6,636.37	167.05	1,217,536.97	6,812.28	178.73	11.68
Stowupland	39,832.00	750.05	53.11	46,137.00	843.48	54.70	1.59
Stradbroke	36,620.00	564.77	64.84	38,549.00	573.96	67.16	2.32
Stuston	-	85.82	-	470.00	87.56	5.37	5.37
Syleham	3,750.00	91.74	40.88	3,922.00	95.95	40.88	0.00
Tannington	-	40.75	-	-	41.34	-	0.00
Thorndon	19,000.00	316.17	60.09	21,500.00	343.70	62.55	2.46
Thornham Magna	1,000.00	79.90	12.52	1,000.00	82.26	12.16	-0.36
Thornham Parva	300.00	24.67	12.16	300.00	28.94	10.37	-1.79
Thrandeston	2,500.00	72.63	34.42	2,500.00	76.22	32.80	-1.62
Thurston	105,864.00	1,220.96	86.71	125,480.00	1,380.20	90.91	4.20
Thwaite	3,000.67	61.38	48.89	2,954.15	61.87	47.75	-1.14
Tostock	9,450.00	208.66	45.29	10,474.00	220.26	47.55	2.26
Walsham-le-Willows	21,900.00	480.75	45.55	22,250.00	483.79	45.99	0.44
Wattisfield	9,800.00	194.44	50.40	10,638.00	201.02	52.92	2.52
Westhorpe	2,450.00	81.39	30.10	3,525.00	83.88	42.02	11.92
Wetherden	12,890.00	239.71	53.77	12,890.00	246.24	52.35	-1.42
Wetheringsett-cum-Brockford	8,850.00	278.25	31.81	9,830.00	287.04	34.25	2.44
Weybread	5,000.00	178.64	27.99	5,100.00	183.86	27.74	-0.25
Whitton	1,616.18	30.26	53.41	1,672.75	31.32	53.41	0.00
Wickham Skeith	3,500.00	135.67	25.80	3,723.00	138.77	26.83	1.03
Wilby	5,833.00	133.72	43.62	5,954.00	137.84	43.20	-0.42
Willisham	3,831.02	106.60	35.94	4,076.92	106.75	38.19	2.25
Wingfield	6,000.00	144.66	41.48	6,126.00	147.72	41.47	-0.01
Winston	650.00	69.60	9.34	850.00	70.15	12.12	2.78
Woolpit	30,000.00	807.54	37.15	60,000.00	838.06	71.59	34.44
Worlingworth	13,359.96	318.31	41.97	13,625.82	328.61	41.47	-0.50
Wortham	14,878.55	335.43	44.36	15,306.36	343.37	44.58	0.22
Wyverstone	3,230.00	137.44	23.50	3,230.00	146.02	22.12	-1.38
Yaxley	6,250.00	208.56	29.97	6,250.00	221.11	28.27	-1.70
Total	2,922,114.41	37,189.71	78.57	3,212,636.02	38,853.22	5,277.62	175.26

APPENDIX B

Precept for each banding by Parish

	Valuation Bands							
	A	B	C	D	E	F	G	H
Mid Suffolk District Council	114.39	133.46	152.52	171.59	209.72	247.85	285.98	343.18
Suffolk County Council	959.28	1,119.16	1,279.04	1,438.92	1,758.68	2,078.44	2,398.20	2,877.84
Police and Crime Commissioner	165.12	192.64	220.16	247.68	302.72	357.76	412.80	495.36
Aggregate of Council Tax Requirements	1,238.79	1,445.26	1,651.72	1,858.19	2,271.12	2,684.05	3,096.98	3,716.38

Parish	Total Amount of Council Tax for 2022/23							
	6/9 ths	7/9 ths	8/9 ths		11/9 ths	13/9 ths	15/9 ths	18/9 ths
	Band A £	Band B £	Band C £	Band D £	Band E £	Band F £	Band G £	Band H £
Akenham	1,238.79	1,445.26	1,651.72	1,858.19	2,271.12	2,684.05	3,096.98	3,716.38
Ashbocking	1,248.10	1,456.12	1,664.13	1,872.15	2,288.18	2,704.22	3,120.25	3,744.30
Ashfield-cum-Thorpe	1,259.70	1,469.65	1,679.60	1,889.55	2,309.45	2,729.35	3,149.25	3,779.10
Aspall	1,238.79	1,445.26	1,651.72	1,858.19	2,271.12	2,684.05	3,096.98	3,716.38
Athelington	1,252.27	1,460.99	1,669.70	1,878.41	2,295.83	2,713.26	3,130.68	3,756.82
Bacton	1,279.42	1,492.66	1,705.89	1,919.13	2,345.60	2,772.08	3,198.55	3,838.26
Badley	1,238.79	1,445.26	1,651.72	1,858.19	2,271.12	2,684.05	3,096.98	3,716.38
Badwell Ash	1,287.02	1,501.52	1,716.03	1,930.53	2,359.54	2,788.54	3,217.55	3,861.06
Barham	1,272.87	1,485.02	1,697.16	1,909.31	2,333.60	2,757.89	3,182.18	3,818.62
Barking	1,284.25	1,498.30	1,712.34	1,926.38	2,354.46	2,782.55	3,210.63	3,852.76
Battisford	1,271.89	1,483.87	1,695.85	1,907.83	2,331.79	2,755.75	3,179.72	3,815.66
Baylham	1,238.79	1,445.26	1,651.72	1,858.19	2,271.12	2,684.05	3,096.98	3,716.38
Bedfield	1,255.21	1,464.41	1,673.61	1,882.81	2,301.21	2,719.61	3,138.02	3,765.62
Bedingfield	1,249.68	1,457.96	1,666.24	1,874.52	2,291.08	2,707.64	3,124.20	3,749.04
Beyton	1,288.47	1,503.21	1,717.96	1,932.70	2,362.19	2,791.68	3,221.17	3,865.40
Botesdale	1,340.35	1,563.74	1,787.13	2,010.52	2,457.30	2,904.08	3,350.87	4,021.04
Braiseworth	1,238.79	1,445.26	1,651.72	1,858.19	2,271.12	2,684.05	3,096.98	3,716.38
Bramford	1,292.51	1,507.93	1,723.35	1,938.77	2,369.61	2,800.45	3,231.28	3,877.54
Brome and Oakley	1,260.83	1,470.97	1,681.11	1,891.25	2,311.53	2,731.81	3,152.08	3,782.50
Brundish	1,273.36	1,485.59	1,697.81	1,910.04	2,334.49	2,758.95	3,183.40	3,820.08
Burgat	1,268.51	1,479.93	1,691.35	1,902.77	2,325.61	2,748.45	3,171.28	3,805.54
Buxhall	1,264.11	1,474.80	1,685.48	1,896.17	2,317.54	2,738.91	3,160.28	3,792.34
Claydon	1,274.40	1,486.80	1,699.20	1,911.60	2,336.40	2,761.20	3,186.00	3,823.20
Coddenham	1,314.96	1,534.12	1,753.28	1,972.44	2,410.76	2,849.08	3,287.40	3,944.88
Combs	1,258.08	1,467.76	1,677.44	1,887.12	2,306.48	2,725.84	3,145.20	3,774.24
Cotton	1,261.33	1,471.56	1,681.78	1,892.00	2,312.44	2,732.89	3,153.33	3,784.00
Creeting St Mary	1,260.66	1,470.77	1,680.88	1,890.99	2,311.21	2,731.43	3,151.65	3,781.98
Creeting St Peter	1,272.93	1,485.08	1,697.24	1,909.39	2,333.70	2,758.01	3,182.32	3,818.78
Crowfield	1,250.33	1,458.71	1,667.10	1,875.49	2,292.27	2,709.04	3,125.82	3,750.98
Darmsden	1,238.79	1,445.26	1,651.72	1,858.19	2,271.12	2,684.05	3,096.98	3,716.38
Debenham	1303.38	1,520.61	1,737.84	1,955.07	2,389.53	2,823.99	3,258.45	3,910.14
Denham	1,266.11	1,477.12	1,688.14	1,899.16	2,321.20	2,743.23	3,165.27	3,798.32
Drinkstone	1,260.23	1,470.27	1,680.31	1,890.35	2,310.43	2,730.51	3,150.58	3,780.70
Earl Stonham	1,256.11	1,465.46	1,674.81	1,884.16	2,302.86	2,721.56	3,140.27	3,768.32
Elmswell	1,314.79	1,533.92	1,753.05	1,972.18	2,410.44	2,848.70	3,286.97	3,944.36
Eye	1,347.83	1,572.46	1,797.10	2,021.74	2,471.02	2,920.29	3,369.57	4,043.48
Felsham	1,264.30	1,475.02	1,685.73	1,896.45	2,317.88	2,739.32	3,160.75	3,792.90
Finningham	1,261.32	1,471.54	1,681.76	1,891.98	2,312.42	2,732.86	3,153.30	3,783.96
Flowton	1,238.79	1,445.26	1,651.72	1,858.19	2,271.12	2,684.05	3,096.98	3,716.38
Framsden	1,285.77	1,500.06	1,714.36	1,928.65	2,357.24	2,785.83	3,214.42	3,857.30
Fressingfield	1,289.61	1,504.55	1,719.48	1,934.42	2,364.29	2,794.16	3,224.03	3,868.84

APPENDIX B

Precept for each banding by Parish

	Valuation Bands							
	A	B	C	D	E	F	G	H
Mid Suffolk District Council	114.39	133.46	152.52	171.59	209.72	247.85	285.98	343.18
Suffolk County Council	959.28	1,119.16	1,279.04	1,438.92	1,758.68	2,078.44	2,398.20	2,877.84
Police and Crime Commissioner	165.12	192.64	220.16	247.68	302.72	357.76	412.80	495.36
Aggregate of Council Tax Requirements	1,238.79	1,445.26	1,651.72	1,858.19	2,271.12	2,684.05	3,096.98	3,716.38

Parish	Total Amount of Council Tax for 2022/23							
	6/9 ths	7/9 ths	8/9 ths		11/9 ths	13/9 ths	15/9 ths	18/9 ths
	Band A £	Band B £	Band C £	Band D £	Band E £	Band F £	Band G £	Band H £
Gedding	1,251.55	1,460.15	1,668.74	1,877.33	2,294.51	2,711.70	3,128.88	3,754.66
Gipping	1,279.45	1,492.70	1,705.94	1,919.18	2,345.66	2,772.15	3,198.63	3,838.36
Gislingham	1,262.12	1,472.47	1,682.83	1,893.18	2,313.89	2,734.59	3,155.30	3,786.36
Gosbeck	1,250.07	1,458.41	1,666.76	1,875.10	2,291.79	2,708.48	3,125.17	3,750.20
Great Ashfield	1,250.55	1,458.98	1,667.40	1,875.83	2,292.68	2,709.53	3,126.38	3,751.66
Great Blakenham	1,277.33	1,490.21	1,703.10	1,915.99	2,341.77	2,767.54	3,193.32	3,831.98
Great Bricett	1,270.86	1,482.67	1,694.48	1,906.29	2,329.91	2,753.53	3,177.15	3,812.58
Great Finborough	1,267.96	1,479.29	1,690.61	1,901.94	2,324.59	2,747.25	3,169.90	3,803.88
Harleston	1,257.56	1,467.15	1,676.75	1,886.34	2,305.53	2,724.71	3,143.90	3,772.68
Haughley	1,293.29	1,508.84	1,724.39	1,939.94	2,371.04	2,802.14	3,233.23	3,879.88
Helmingham	1,264.13	1,474.81	1,685.50	1,896.19	2,317.57	2,738.94	3,160.32	3,792.38
Hemingstone	1,253.28	1,462.16	1,671.04	1,879.92	2,297.68	2,715.44	3,133.20	3,759.84
Henley	1,274.48	1,486.89	1,699.31	1,911.72	2,336.55	2,761.37	3,186.20	3,823.44
Hessett	1,271.40	1,483.30	1,695.20	1,907.10	2,330.90	2,754.70	3,178.50	3,814.20
Hinderclay	1,265.49	1,476.40	1,687.32	1,898.23	2,320.06	2,741.89	3,163.72	3,796.46
Horham	1,252.27	1,460.99	1,669.70	1,878.41	2,295.83	2,713.26	3,130.68	3,756.82
Hoxne	1,264.09	1,474.77	1,685.45	1,896.13	2,317.49	2,738.85	3,160.22	3,792.26
Hunston	1,238.79	1,445.26	1,651.72	1,858.19	2,271.12	2,684.05	3,096.98	3,716.38
Kenton	1,249.54	1,457.80	1,666.05	1,874.31	2,290.82	2,707.34	3,123.85	3,748.62
Langham	1,238.79	1,445.26	1,651.72	1,858.19	2,271.12	2,684.05	3,096.98	3,716.38
Laxfield	1,311.81	1,530.45	1,749.08	1,967.72	2,404.99	2,842.26	3,279.53	3,935.44
Little Blakenham	1,279.55	1,492.80	1,706.06	1,919.32	2,345.84	2,772.35	3,198.87	3,838.64
Little Finborough	1,238.79	1,445.26	1,651.72	1,858.19	2,271.12	2,684.05	3,096.98	3,716.38
Mellis	1,264.48	1,475.23	1,685.97	1,896.72	2,318.21	2,739.71	3,161.20	3,793.44
Mendham	1,263.12	1,473.64	1,684.16	1,894.68	2,315.72	2,736.76	3,157.80	3,789.36
Mendlesham	1,289.05	1,503.89	1,718.73	1,933.57	2,363.25	2,792.93	3,222.62	3,867.14
Metfield	1,260.28	1,470.33	1,680.37	1,890.42	2,310.51	2,730.61	3,150.70	3,780.84
Mickfield	1,271.63	1,483.56	1,695.50	1,907.44	2,331.32	2,755.19	3,179.07	3,814.88
Monk Soham	1,258.35	1,468.07	1,677.80	1,887.52	2,306.97	2,726.42	3,145.87	3,775.04
Needham Market	1,293.67	1,509.28	1,724.89	1,940.50	2,371.72	2,802.94	3,234.17	3,881.00
Nettlestead	1,238.79	1,445.26	1,651.72	1,858.19	2,271.12	2,684.05	3,096.98	3,716.38
Norton	1,274.95	1,487.44	1,699.93	1,912.42	2,337.40	2,762.38	3,187.37	3,824.84
Occold	1,266.94	1,478.10	1,689.25	1,900.41	2,322.72	2,745.04	3,167.35	3,800.82
Offton	1,264.25	1,474.96	1,685.67	1,896.38	2,317.80	2,739.22	3,160.63	3,792.76
Old Newton with Dagwort	1,279.45	1,492.70	1,705.94	1,919.18	2,345.66	2,772.15	3,198.63	3,838.36
Onehouse	1,270.48	1,482.23	1,693.97	1,905.72	2,329.21	2,752.71	3,176.20	3,811.44
Palgrave	1,268.97	1,480.47	1,691.96	1,903.46	2,326.45	2,749.44	3,172.43	3,806.92
Pettaugh	1,261.00	1,471.17	1,681.33	1,891.50	2,311.83	2,732.17	3,152.50	3,783.00
Rattlesden	1,275.39	1,487.95	1,700.52	1,913.08	2,338.21	2,763.34	3,188.47	3,826.16
Redgrave	1,293.71	1,509.33	1,724.95	1,940.57	2,371.81	2,803.05	3,234.28	3,881.14
Redlingfield	1,238.79	1,445.26	1,651.72	1,858.19	2,271.12	2,684.05	3,096.98	3,716.38
Rickinghall Inferior	1,279.58	1,492.84	1,706.11	1,919.37	2,345.90	2,772.42	3,198.95	3,838.74
Rickinghall Superior	1,279.58	1,492.84	1,706.11	1,919.37	2,345.90	2,772.42	3,198.95	3,838.74

Precept for each banding by Parish

	Valuation Bands							
	A	B	C	D	E	F	G	H
Mid Suffolk District Council	114.39	133.46	152.52	171.59	209.72	247.85	285.98	343.18
Suffolk County Council	959.28	1,119.16	1,279.04	1,438.92	1,758.68	2,078.44	2,398.20	2,877.84
Police and Crime Commissioner	165.12	192.64	220.16	247.68	302.72	357.76	412.80	495.36
Aggregate of Council Tax Requirements	1,238.79	1,445.26	1,651.72	1,858.19	2,271.12	2,684.05	3,096.98	3,716.38

Parish	Total Amount of Council Tax for 2022/23							
	6/9 ths	7/9 ths	8/9 ths		11/9 ths	13/9 ths	15/9 ths	18/9 ths
	Band A £	Band B £	Band C £	Band D £	Band E £	Band F £	Band G £	Band H £
Ringshall	1,259.77	1,469.73	1,679.69	1,889.65	2,309.57	2,729.49	3,149.42	3,779.30
Rishangle	1,238.79	1,445.26	1,651.72	1,858.19	2,271.12	2,684.05	3,096.98	3,716.38
Shelland	1,238.79	1,445.26	1,651.72	1,858.19	2,271.12	2,684.05	3,096.98	3,716.38
Somersham	1,286.46	1,500.87	1,715.28	1,929.69	2,358.51	2,787.33	3,216.15	3,859.38
Southolt	1,238.79	1,445.26	1,651.72	1,858.19	2,271.12	2,684.05	3,096.98	3,716.38
Stoke Ash	1,270.63	1,482.40	1,694.17	1,905.94	2,329.48	2,753.02	3,176.57	3,811.88
Stonham Aspal	1,253.89	1,462.88	1,671.86	1,880.84	2,298.80	2,716.77	3,134.73	3,761.68
Stonham Parva	1,271.43	1,483.34	1,695.24	1,907.15	2,330.96	2,754.77	3,178.58	3,814.30
Stowlangtoft	1,263.47	1,474.05	1,684.63	1,895.21	2,316.37	2,737.53	3,158.68	3,790.42
Stowmarket	1,357.95	1,584.27	1,810.60	2,036.92	2,489.57	2,942.22	3,394.87	4,073.84
Stowupland	1,275.26	1,487.80	1,700.35	1,912.89	2,337.98	2,763.06	3,188.15	3,825.78
Stradbroke	1,283.57	1,497.49	1,711.42	1,925.35	2,353.21	2,781.06	3,208.92	3,850.70
Stuston	1,242.37	1,449.44	1,656.50	1,863.56	2,277.68	2,691.81	3,105.93	3,727.12
Syleham	1,266.05	1,477.05	1,688.06	1,899.07	2,321.09	2,743.10	3,165.12	3,798.14
Tannington	1,238.79	1,445.26	1,651.72	1,858.19	2,271.12	2,684.05	3,096.98	3,716.38
Thorndon	1,280.49	1,493.91	1,707.32	1,920.74	2,347.57	2,774.40	3,201.23	3,841.48
Thornham Magna	1,246.90	1,454.72	1,662.53	1,870.35	2,285.98	2,701.62	3,117.25	3,740.70
Thornham Parva	1,245.71	1,453.32	1,660.94	1,868.56	2,283.80	2,699.03	3,114.27	3,737.12
Thrandeston	1,260.66	1,470.77	1,680.88	1,890.99	2,311.21	2,731.43	3,151.65	3,781.98
Thurston	1,299.40	1,515.97	1,732.53	1,949.10	2,382.23	2,815.37	3,248.50	3,898.20
Thwaite	1,270.63	1,482.40	1,694.17	1,905.94	2,329.48	2,753.02	3,176.57	3,811.88
Tostock	1,270.49	1,482.24	1,693.99	1,905.74	2,329.24	2,752.74	3,176.23	3,811.48
Walsham-le-Willows	1,269.45	1,481.03	1,692.60	1,904.18	2,327.33	2,750.48	3,173.63	3,808.36
Wattisfield	1,274.07	1,486.42	1,698.76	1,911.11	2,335.80	2,760.49	3,185.18	3,822.22
Westhorpe	1,266.81	1,477.94	1,689.08	1,900.21	2,322.48	2,744.75	3,167.02	3,800.42
Wetherden	1,273.69	1,485.98	1,698.26	1,910.54	2,335.10	2,759.67	3,184.23	3,821.08
Wetheringsett-cum-Brockford	1,261.63	1,471.90	1,682.17	1,892.44	2,312.98	2,733.52	3,154.07	3,784.88
Weybread	1,257.29	1,466.83	1,676.38	1,885.93	2,305.03	2,724.12	3,143.22	3,771.86
Whitton	1,274.40	1,486.80	1,699.20	1,911.60	2,336.40	2,761.20	3,186.00	3,823.20
Wickham Skeith	1,256.68	1,466.13	1,675.57	1,885.02	2,303.91	2,722.81	3,141.70	3,770.04
Wilby	1,267.59	1,478.86	1,690.12	1,901.39	2,323.92	2,746.45	3,168.98	3,802.78
Willisham	1,264.25	1,474.96	1,685.67	1,896.38	2,317.80	2,739.22	3,160.63	3,792.76
Wingfield	1,266.44	1,477.51	1,688.59	1,899.66	2,321.81	2,743.95	3,166.10	3,799.32
Winston	1,246.87	1,454.69	1,662.50	1,870.31	2,285.93	2,701.56	3,117.18	3,740.62
Woolpit	1,286.52	1,500.94	1,715.36	1,929.78	2,358.62	2,787.46	3,216.30	3,859.56
Worlingworth	1,266.44	1,477.51	1,688.59	1,899.66	2,321.81	2,743.95	3,166.10	3,799.32
Wortham	1,268.51	1,479.93	1,691.35	1,902.77	2,325.61	2,748.45	3,171.28	3,805.54
Wyverstone	1,253.54	1,462.46	1,671.39	1,880.31	2,298.16	2,716.00	3,133.85	3,760.62
Yaxley	1,257.64	1,467.25	1,676.85	1,886.46	2,305.67	2,724.89	3,144.10	3,772.92

Budget, Funding and Council Tax Requirements

- 1) The precept requirements of Parish / Town Councils must be aggregated with the requirement of this authority to arrive at an average Council Tax figure for the district / parish purposes. This figure however is totally hypothetical and will not be paid by any taxpayer (other than by coincidence). A schedule of the precept requirements from Parish / Town Councils will be reported to Council on 24 February 2022.
- 2) The County and the Police and Crime Commissioner’s precept requirements are added to this.
- 3) The legally required calculation is set out below:
 - 1) The General Fund Budget requirement for the District Council purposes in 2022/23 will be £171.59, based on no increase to Council Tax for a Band D property.
 - 2) The County Council precept requirement will be £1,438.92 for a Band D property in 2022/23, an increase of 2.99%.
 - 3) The Police and Crime Commissioner’s precept requirement is £247.68 an increase of 4.2%.
 - 4) At the time of preparing this report, two Parish / Town Councils are yet to supply formal notification of their 2022/23 precept, although informal confirmation has been received.
- 4) Mid Suffolk is a billing authority and collects council tax and non-domestic rates on behalf of the other precepting authorities i.e. Suffolk County Council, Suffolk Police and Crime Commissioner and Parish / Town Councils. The dates that monies collected are paid over to the County Council, and the Police and Crime Commissioner (“precept dates”) need to be formally agreed under Regulation 5(i) of the Local Authorities (Funds) (England) Regulations 1992.
- 5) Established practice is for payments to be made in 12 equal instalments on the 15th of each month or the next banking day if the 15th falls on a weekend or bank holiday. Accordingly, the precept dates applicable for 2022/23 are expected to be as follows:

19 April 2022	16 May 2022	15 June 2022	15 July 2022
15 August 2022	15 September 2022	17 October 2022	15 November 2022
15 December 2022	16 January 2023	15 February 2023	15 March 2023

Section 25 report on the robustness of estimates and adequacy of reserves

1. Background

- 1.1 Section 25 of the Local Government Act 2003 requires Councils, when setting its annual General Fund budget and level of council tax, to take account of a report from its Section 151 Officer on the robustness of estimates and adequacy of reserves. This report fulfils that requirement for the setting of the budget and council tax for 2022/23.
- 1.2 This is to ensure that when deciding on its budget for a financial year, Members are made aware of any issues of risk and uncertainty, or any other concerns by the Chief Financial Officer (CFO). The local authority is also expected to ensure that its budget provides for a prudent level of reserves to be maintained.
- 1.3 Section 26 of the Act empowers the Secretary of State to set a minimum level of reserves for which a local authority must provide in setting its budget. Section 26 would only be invoked as a fallback in circumstances in which a local authority does not act prudently, disregards the advice of its CFO and is heading for financial difficulty. The Section 151 Officer and Members, therefore, have a responsibility to ensure in considering the budget that:
 - It is realistic and achievable and that appropriate arrangements have been adopted in formulating it.
 - It is based on clearly understood and sound assumptions and links to the delivery of the Council's strategic priorities.
 - It includes an appropriate statement on the use of reserves and the adequacy of these.

2. Basis of Advice for Section 25 Report

- 2.1 In forming the advice for this year's Section 25 report, the CFO has considered the following:
 - a) The role of the Chief Finance Officer
 - b) The effectiveness of financial controls
 - c) The effectiveness of budget planning and budget management
 - d) The adequacy of insurance and risk management
 - e) The mitigation of strategic financial risks
 - f) The Capital Programme

a) Role of the Chief Finance Officer

- 2.2 The statutory role of the Chief Finance Officer in relation to financial administration and stewardship of the Council, and its role in the organisation are both key to ensuring that financial discipline is maintained.
- 2.3 The statutory duties of the Chief Finance Officer are set out in the Financial Regulations which form part of the Council's Constitution. These include the requirement to report to council if there is an unbalanced budget (under Section 114 of the Local Government Act 1988).

2.4 The Chartered Institute of Public Finance and Accountancy (CIPFA) published a Statement on the Role of the Chief Financial Officer (CFO) in Local Government. The Statement requires that in order to meet best practice the CFO:

- a) is a key member of the Leadership Team, helping it to develop and implement strategy and to resource and deliver the organisation's strategic objectives sustainably and in the public interest;
- b) must be actively involved in, and able to bring influence to bear on, all material business decisions to ensure immediate and longer-term implications, opportunities and risks are fully considered, and alignment with the organisation's financial strategy; and
- c) must lead the promotion and delivery by the whole organisation of good financial management so that public money is safeguarded at all times and used appropriately, economically, efficiently and effectively.

To deliver these responsibilities the CFO:

- d) must lead and direct a finance function that is resourced to be fit for purpose; and
- e) must be professionally qualified and suitably experienced.
- f) The CIPFA Financial Management Code came into effect from the 1st April 2021, the code complements the Statement on the Role of the Chief Financial Officer, including a set of financial management standards that the Council is complying with. The standards emphasise how financial management is a collective responsibility of the Council's Corporate Leadership Team, acting alongside the CFO, stating that "it is for the leadership team to ensure that the authority's governance arrangements and style of financial management promote financial sustainability. These standards have been considered in drafting this statement.

b) Financial Controls

2.5 CIPFA's Financial Resilience Index, made publicly available for the first time in 2019, aims to support good practice in the planning of sustainable finance. The index does not come with CIPFA's own scoring, ranking or opinion on the financial resilience of an authority. However, users of the index can undertake comparator analysis drawing their own conclusions. The tool is based on a series of indicators relating to the sustainability of reserves, external debt, fees & charges and income from local taxation (business rates and council tax).

2.6 The 2020 index, which provides the relative position for the 2019/20 financial year, is the most up to date index currently available. Councils' performance is ranked relative to those in the selected 'comparator group'.

2.7 Mid Suffolk is seen as having higher risks around the level of external debt, interest payable and the proportion of fees and charges income against total revenue expenditure. The external debt includes that associated with the HRA, so the Council will always be seen as a higher risk compared to those councils without housing stock, but it is balanced against the value of the housing stock on the Council's balance sheet.

- 2.8 The other elements are all linked to the investment that the Council has made in CIFCO by increasing General Fund debt levels, higher interest payments, but also higher investment income coming back to the Council and is secured by charges on the properties acquired by CIFCO.
- 2.9 Alongside the statutory role of the CFO the Council has in place a number of financial management policies and financial controls which are set out in the Financial Regulations.
- 2.10 Other safeguards which ensure that the Council does not over-commit financially include:
- a) the statutory requirement for each local authority to set and arrange their affairs to remain within prudential limits for borrowing and capital investment;
 - b) the balanced budget requirement of the Local Government Finance Act 1992 (Sections 32, 43 and 93); and
 - c) the auditors' consideration of whether the authority has made proper arrangements to secure economy, efficiency and effectiveness in its use of resources (the value for money conclusion).
- 2.11 The Council conducts an annual review of the effectiveness of the system of internal control and reports on this in the "Annual Governance Statement".
- 2.12 The internal and external audit functions play a key role in ensuring that the Council's financial controls and governance arrangements are operating satisfactorily. This is backed up by the review processes of Cabinet and the Joint Audit and Standards Committee undertaking the role of the Council's Audit Committee.

c) Budget Planning and Budget Management

- 2.13 The financial planning process is Councillor-led as Cabinet decides the principles and policies that underpin budget planning. The Budget Report describes the strategy for 2022/23 and beyond.
- 2.14 Cost pressures and variations in key areas of income and expenditure have been carefully considered and reflected in the budget.
- 2.15 Key assumptions have been made and updated during the budget process to reflect the changing economic position and latest information. The continuing impact of Covid-19 on the Council's finances and budget assumptions for 2022/23 has also been considered and included in the process.
- 2.16 Detailed scrutiny, review and challenge of budgets has been undertaken by finance officers and the Senior Leadership Team.

- 2.17 There has been an examination by the Overview and Scrutiny Committee in advance of the budget being approved. The recommendations made by the Committee are considered by Cabinet before the budget is presented to Council.
- 2.18 A key factor in effective budget management is the Council's regular monitoring of spending against budgets throughout the year and at year-end. Budget managers are required to update their forecasts during the year and these are subject to review by Cabinet on a quarterly basis. The development of budget managers and initiatives to strengthen budgetary control and financial management throughout the Council is an ongoing process.
- 2.19 The Council has a proven track record on budget management, which is confirmed by Ernst & Young in their Annual Audit Letter. The auditors are required to form a conclusion on the arrangements the Council has put in place to secure economy, efficiency and effectiveness in its use of resources. There has been a delay in the external audit process for 2020/21, but an unqualified opinion was achieved for 2019/20 and is expected again for 2020/21.
- 2.20 As part of the audit work for the 2019/20 and 2020/21 financial statements, a going concern review was undertaken in light of Covid19. The Council has demonstrated that it is currently in a strong financial position with the level of reserves it has and the funding received from the Government mitigating the financial impact forecast at this stage.

d) Adequacy of Insurance and Risk Management

- 2.21 The Council's insurance arrangements are in the form of external insurance premiums with regular reviews being undertaken of the level at which risks are insured.
- 2.22 A critical area where risk management thinking can add significant value is to enhance the planning and budgeting process. Utilising a risk-based approach directly links to the Council's risk appetite to its core financial and economic performance, supported by the Council's Significant Risk Register. The goal when integrating risk management into budget planning is to understand the assumptions that the budget is based on.
- 2.23 The effective application of the Council's risk management principles enhances many processes within the context of managing its services and enables management to make better and more informed decision.
- 2.24 Our approach is to identify the major line items of each service budget, the personnel who contributed to them and the basis of estimation and then to ask key questions such as:
- What are the potential risks that could interfere with the accuracy of the estimate?
 - What is the likelihood of these risks materialising?
 - What would the impact on the organisation be if they did materialise?

e) **Mitigation of Strategic Financial Risk**

2.25 No budget can be completely free from risk and this is especially true with the ongoing Covid-19 pandemic affecting the Councils finances. Some comments on the areas of the budget having key financial impacts or significant changes for 2022/23 are set out below:

- **Covid-19** – With the prolonged duration of the Covid-19 pandemic there could be an ongoing financial impact into 2022/23 and beyond in terms of increased costs and reduced income. The cost pressures are most likely to be seen for homelessness and leisure provision. The reduced income is likely to be seen for car parking and potentially council tax and business rates income levels, but depending upon the extent of the continuing impacts it could also be seen in terms of trade waste, planning income and commercial income although these have seen lesser impacts to date.
- **Pay and Pensions** – The budget includes provision for pay increases of 2% for each of the 4 years to 2025/26 and continues to provide for annual progression through pay scales where employees are not at the top of their grades. A 1% change in pay amounts to around £110k per annum.

Based on the 2019 triennial pension fund valuation a decrease of 1% per annum has been included for each of the three years that commenced from 2020/21.

The Council's establishment budget is based on a full establishment. To allow for in-year vacancy savings the budget includes an annual vacancy saving of £550k, which equates to 5%.

- **Price Increases** – Allowances for price increases have been made on some budgets including major contracts, where there is a contractual requirement to do so. For other areas the budget assumes any price inflation is absorbed by the service. A 1% change in the refuse and ICT contracts and the Shared Revenues Partnership is around £39k.
- **Income from Fees and Charges** – A significant part of the Council's costs continue to be met from fees and charges. For some of these headings it is difficult to predict the level of income to be received e.g. planning fees, so progress against these income targets will need to be monitored throughout the year, particularly in the light of continuing economic volatility as a result of the Covid-19 pandemic. A 1% change in fees and charges income including from planning, building control, garden waste, car park and recycling performance payments income is around £51k.
- **Investment Income and Interest Payable** – Since 2009 interest rates have produced low returns from investments, but the Council has diversified its investments into a property fund and other pooled funds, following advice from Arlingclose, to increase the return on investment. Following implementation of International Financial Reporting Standards (IFRS) and how changes to the year-end values of pooled funds have to be treated could encourage the redemption of holdings and reduce the anticipated level of return, but this will not come into force until April 2023.

The Council has made other commercial investments to generate income or regenerate an area, but the income generation aspect will be restricted in future following the changes to the lending terms of the Public Works Loan Board (PWLB) from November 2020. Where this investment is relying on borrowing as the funding source then any return will be subject to changes in interest rates. The 2022/23 budget includes the full year effect of the second £25m investment in CIFCO to generate additional income, but no further investments will be made, enabling the Council to access the PWLB for housing and other economic development and regeneration purposes.

The Council continues to accrue income based on the loans made to Gateway 14 Ltd, but to date no cash has been received from the company. This risk has been balanced by establishing the Commercial Development Risk Management Reserve into which the accrued interest has been placed each year and can be called upon should the company default on its interest payments. This risk is diminishing now that planning permission has been granted for the site.

- **Business Rates Retention** – As business rates is an increasingly important source of income for the Council, measures for closer monitoring have been put in place. Under the current retention system, the General Fund's exposure to variances can come from economic decline, cessation of business from a major ratepayer and appeals to rateable values, all of which have been seen during the Covid-19 pandemic. The Council operates a Business Rates and Council Tax Collection Fund Reserve to cover for this possibility as appropriate and the Government provided some funding to cover irrecoverable tax losses.

The change to 75% retention of business rates is now unlikely to be taken forward and the reset has been deferred. The figures beyond 2022/23 assume a continuation of resources at the current level, but this is unknown. If baseline funding levels should reduce, the Business Rates and Council tax Collection Fund Reserve could be used to support a short-term reduction, but medium-term plans and resources would need to be reviewed.

- **Council Tax Income and the Tax Base** – the impact from Covid on collection rates, the number of Local Council Tax Reduction (LCTR) claimants and the build rate of new homes across the district has been less than anticipated when the budget for 2021/22 was set. This means that a 4.47% increase has been calculated for the tax base for 2022/23, which will generate additional council tax income of £285k. As a result of the improved position, a surplus of £293k is anticipated on the Collection Fund for 2021/22, which is included in the budget for 2022/23.

- **Government Funding** – The Council’s share of Revenue Support Grant (RSG) ended after 2018/19 and in theory is now in a negative RSG position i.e. money to be paid to the Government for redistribution. This has again been offset by centrally retained business rates money for 2022/23 as it was for 2019/20, 2020/21 and 2021/22. The Council’s core Government funding is now reduced to Rural Services Delivery Grant (RSDG), New Homes Bonus (NHB), Lower Tier Services Grant and a new Services Grant for 2022/23 only. 2022/23 is a further one-year settlement from the Government. Funding levels beyond 2022/23 are therefore currently uncertain, so the medium-term figures are based on the current level of RSDG continuing and NHB reducing in 2023/24 and future years.
- **Welfare Reforms, Benefits and Council Tax Reductions** – At a forecast of £10.2m for 2022/23, housing benefit remains one of the Council’s largest financial transactions, which due to the welfare reforms and introduction of Universal Credit and the Council Tax Reduction scheme is subject to increasing risk and change. This will continue to be closely monitored in order to protect the Council from any emerging risks and liabilities.

f) **Capital Programme**

2.26 The Council’s new capital programme funding for the next 4 years is £23.3m which is largely funded through borrowing and is based upon reasonable estimates of cost and capacity to deliver the programme. The programme has been developed to support the key deliverables of the Council and its ambition through the Joint Corporate Plan.

2.27 A key risk therefore to consider in the Council’s budget planning is the interest cost and provision for repayment of debt (Minimum Revenue Provision – MRP) that it will need to meet commitments on the borrowing it undertakes for capital purposes. The Government’s consultation on MRP, if implemented, could increase costs from 2023/24.

2.28 Review of the capital programme on an ongoing basis is required to ensure that future borrowing is targeted on projects that deliver the most for the district and are affordable within the current revenue resources.

2.29 The borrowing strategy and MRP policy are set out in detail in the Capital, Investment and Treasury Management Strategies document.

Conclusion

2.30 Taking all of the above into consideration, the Section 151 Officer’s opinion is that the Council’s budget and estimates are reasonable based on the assumptions and available information, but cannot be absolutely robust, so a full assurance cannot be given that there will be no unforeseen adverse variances.

2.31 This is an expected and acceptable situation for any organisation that is dealing with a large number of variables. Also, the general economic situation resulting from the ongoing Covid-19 pandemic continues to impact on expenditure and income. The minimum safe level of reserves proved to be sufficient to manage the impact of the Covid-19 pandemic in 2020/21 and 2021/22, alongside the support provided by the Government, which has been the single largest impact on local authorities' finances in recent years, so provided this is maintained, any variations arising as a result of lack of robustness in the estimates should be manageable.

Adequacy of Reserves

- 3.1 There is no available guidance on the minimum level of reserves that should be maintained. Each authority should determine a prudent level of reserves based upon their own circumstances, risk and uncertainties. Regard has been had to guidance that has been issued to CFO's and the risks and uncertainties faced.
- 3.2 The Council is required to maintain adequate financial reserves to meet the needs of the authority. This is the General Reserve and provides a safe level of contingency.
- 3.3 The CFO's opinion is that the minimum level of unearmarked reserves should be maintained at the current level of £1.052m without increasing the risk to the Council, as this has proven to be sufficient during the Covid-19 pandemic alongside the level of support provided by the Government. This represents 12% of the annual General Fund Budget, so no action is required as part of the 2022/23 budget. This is partly based on the understanding that there are further sums available in earmarked reserves that will not be fully spent during 2022/23 as set out below.
- 3.4 Levels of earmarked reserves (excluding those relating to the Housing Revenue Account but including the Transformation Fund) are forecast to be £18.9m as at 31 March 2023. The Growth and Efficiency Fund is continuing to support the delivery of the Council's Joint Corporate Plan in 2022/23.

4. Background Documents

Local Government Act 2003; Guidance Note on Local Authority Reserves and Balances – CIPFA 2003; Medium Term Financial Strategy

Katherine Steel
Assistant Director, Corporate Resources
(Section 151 Officer)